

**AUSTRALIAN EDUCATION UNION – VICTORIAN BRANCH
TAFE AND ADULT PROVISION SECTOR - RECALL**

DECLARATION OF RESULTS FOR UNCONTESTED OFFICES

Results of the election for the following offices conducted in accordance with the provisions of the Workplace Relations Act 1996 and the rules of the organisation.

E2006/241

TAFE and Adult Provision Sector

Delegate to Branch Conference - Ballarat University (2)

No nominations were received

Delegate to Branch Conference - Box Hill Institute of TAFE (2)

No nominations were received

Delegate to Branch Conference - Chisholm Institute of TAFE (5)

No nominations were received

Delegate to Branch Conference - Central Gippsland Institute of TAFE (2)

No nominations were received

Delegate to Branch Conference - East Gippsland Institute of TAFE

No nomination was received

Delegate to Branch Conference - Gordon Institute of TAFE (2)

No nominations were received

Delegate to Branch Conference - Goulburn Ovens Institute of TAFE

No nomination was received

Delegate to Branch Conference - Holmesglen Institute of TAFE (3)

No nominations were received

Delegate to Branch Conference - Kangan/Batman Institute of TAFE (4)

No nominations were received

Delegate to Branch Conference - Northern Melbourne Institute of TAFE (4)

No nominations were received

Delegate to Branch Conference - RMIT - Tafe Division (4)

No nominations were received

Delegate to Branch Conference - South West Institute of TAFE

No nomination was received

Delegate to Branch Conference - Sunraysia Institute of TAFE

No nomination was received

Delegate to Branch Conference - Swinburne University of Technology (TAFE Division) (3)

No nominations were received

Delegate to Branch Conference - Victorian University of Technology (5)

No nominations were received

Delegate to Branch Conference - William Angliss Institute of TAFE

No nomination was received

Delegate to Branch Conference - Wodonga Institute of TAFE

No nomination was received

Delegate to Branch Conference - Disability Services Sub Sector (16)

Candidate

MAJOR, Karen

No further nominations were accepted

Delegate to Branch Conference - AMES Sub Sector (2)

No nominations were received

As the number of nominations accepted did not exceed the number of positions to be filled, I declare the above candidates elected.

Tony King
Returning Officer
16 May 2007

AUSTRALIAN EDUCATION UNION – VICTORIAN BRANCH SECONDARY SECTOR - RECALL

DECLARATION OF RESULTS FOR UNCONTESTED OFFICES

Results of the election for the following offices conducted in accordance with the provisions of the Workplace Relations Act 1996 and the rules of the organisation.

E2006/241

Secondary Sector

Delegate to Branch Conference - Werribee (5)

No nominations were received

Delegate to Branch Conference - Inner West (11)

No nominations were received

Delegate to Branch Conference - Inner City (13)

Candidate

FOARD, Teresa

No further nominations were accepted

Delegate to Branch Conference - Latrobe/Plenty (10)

No nominations were received

Delegate to Branch Conference - Diamond Valley (6)

Candidate

TWIDDY, Andrew

No further nominations were accepted

Delegate to Branch Conference - Maribyrnong (11)

No nominations were received

Delegate to Branch Conference - Broadmeadows (8)

No nominations were received

Delegate to Branch Conference - Sunbury (3)

No nominations were received

Delegate to Branch Conference - Melton (4)

No nominations were received

Delegate to Branch Conference - Doncaster/Warringal (10)

No nominations were received

Delegate to Branch Conference - Greater Waverley (10)

Candidates

BOURKE, Jason

DALTON, Tim

No further nominations were accepted

Delegate to Branch Conference - Inner Eastern (6)

No nominations were received

Delegate to Branch Conference - Longbeach/Moorabbin/Prahran (14)

No nominations were received

Delegate to Branch Conference - Frankston (7)

No nominations were received

Delegate to Branch Conference - Peninsula (4)

No nominations were received

Delegate to Branch Conference - South Eastern (8)

No nominations were received

Delegate to Branch Conference - Berwick/Packenham/Cranbourne (10)

No nominations were received

Delegate to Branch Conference - Wonthaggi (2)

No nominations were received

Delegate to Branch Conference - Outer Eastern (9)

No nominations were received

Delegate to Branch Conference - Yarra Valley (2)

No nominations were received

Delegate to Branch Conference - Knox/Dandenong Ranges (9)

No nominations were received

Delegate to Branch Conference - Geelong (10)

Candidate

HARRIS, Justin

No further nominations were accepted

Delegate to Branch Conference - Colac (2)

Candidate

GRINTON, Bryan James

No further nomination was accepted

Delegate to Branch Conference - Warrnambool (5)

No nominations were received

Delegate to Branch Conference - Hamilton/Portland (2)

No nominations were received

Delegate to Branch Conference - Ballarat (5)

No nominations were received

Delegate to Branch Conference - Stawell (2)

No nominations were received

Delegate to Branch Conference - Horsham

No nomination was received

Delegate to Branch Conference - Bendigo/Echuca/Kyabram (5)

No nominations were received

Delegate to Branch Conference - Swan Hill

No nomination was received

Delegate to Branch Conference - Mildura (2)

No nominations were received

Delegate to Branch Conference - Bendigo (4)

No nominations were received

Delegate to Branch Conference - Maryborough (3)

No nominations were received

Delegate to Branch Conference - Castlemaine/Kyneton (2)

No nominations were received

Delegate to Branch Conference - Shepparton (5)

No nominations were received

Delegate to Branch Conference - Benalla (3)

No nominations were received

Delegate to Branch Conference - Seymour (3)

No nominations were received

Delegate to Branch Conference - Wangaratta (4)

No nominations were received

Delegate to Branch Conference - Wodonga (3)

No nominations were received

Delegate to Branch Conference - East Gippsland (3)

No nominations were received

Delegate to Branch Conference - Sale (2)

No nominations were received

Delegate to Branch Conference - Latrobe Valley (3)

No nominations were received

Delegate to Branch Conference - South Gippsland

No nomination was received

Delegate to Branch Conference - West Gippsland (3)

No nominations were received

Delegate to Branch Conference - Secondary Allied Staff Sub Sector (15)

No nominations were received

As the number of nominations accepted did not exceed the number of positions to be filled, I declare the above candidates elected.

Tony King
Returning Officer

16 May 2007

**AUSTRALIAN EDUCATION UNION – VICTORIAN BRANCH
PRIMARY SECTOR - RECALL**

DECLARATION OF RESULTS FOR UNCONTESTED OFFICES

Results of the election for the following offices conducted in accordance with the provisions of the Workplace Relations Act 1996 and the rules of the organisation.

E2006/241

Primary Sector

Delegate to Branch Conference - Werribee (7)

Candidates

DONAGHY, Mary
GODDARD, Thomas George
KINNIBURGH, Patricia Anne
No further nominations were accepted

Delegate to Branch Conference - Inner West (12)

No nominations were received

Delegate to Branch Conference - Inner City (11)

No nominations were received

Delegate to Branch Conference - Latrobe/Plenty (8)

No nominations were received

Delegate to Branch Conference - Diamond Valley (6)

Candidate

CURTIS, Peter
No further nominations were accepted

Delegate to Branch Conference - Maribyrnong (13)

No nominations were received

Delegate to Branch Conference - Broadmeadows (10)

No nominations were received

Delegate to Branch Conference - Sunbury (4)

No nominations were received

Delegate to Branch Conference - Melton (3)

No nominations were received

Delegate to Branch Conference - Doncaster/Warringal (10)

No nominations were received

Delegate to Branch Conference - Greater Waverley (11)

No nominations were received

Delegate to Branch Conference - Inner Eastern (7)

No nominations were received

Delegate to Branch Conference - Longbeach/Moorabbin/Prahran (19)

No nominations were received

Delegate to Branch Conference - Frankston (9)

No nominations were received

Delegate to Branch Conference - Peninsula (8)

No nominations were received

Delegate to Branch Conference - South Eastern (8)

No nominations were received

Delegate to Branch Conference - Berwick/Pakenham/Cranbourne (12)

No nominations were received

Delegate to Branch Conference - Wonthaggi (3)

No nominations were received

Delegate to Branch Conference - Outer Eastern (9)

No nominations were received

Delegate to Branch Conference - Yarra Valley (3)

No nominations were received

Delegate to Branch Conference - Knox/Dandenong Ranges (13)

No nominations were received

Delegate to Branch Conference - Geelong (11)

Candidate

JENNINGS, Bronwyn

No further nominations were accepted

Delegate to Branch Conference - Colac (2)

No nominations were received

Delegate to Branch Conference - Warrnambool (5)

Candidate

STEELE, Rhonda

No further nominations were accepted

Delegate to Branch Conference - Hamilton/Portland (2)

No nominations were received

Delegate to Branch Conference - Ballarat (9)

No nominations were received

Delegate to Branch Conference - Stawell (2)

No nominations were received

Delegate to Branch Conference - Horsham (3)

No nominations were received

Delegate to Branch Conference - Bendigo/Echuca/Kyabram (4)

No nominations were received

Delegate to Branch Conference - Swan Hill (2)

No nominations were received

Delegate to Branch Conference - Mildura (4)

No nominations were received

Delegate to Branch Conference - Bendigo (3)

No nominations were received

Delegate to Branch Conference - Maryborough (4)

No nominations were received

Delegate to Branch Conference - Castlemaine/Kyneton (3)

No nominations were received

Delegate to Branch Conference - Shepparton (6)

No nominations were received

Delegate to Branch Conference - Benalla (2)

No nominations were received

Delegate to Branch Conference - Seymour (2)

No nominations were received

Delegate to Branch Conference - Wangaratta (2)

No nominations were received

Delegate to Branch Conference - Wodonga (3)

No nominations were received

Delegate to Branch Conference - East Gippsland (4)

No nominations were received

Delegate to Branch Conference - Sale (3)

No nominations were received

Delegate to Branch Conference - Latrobe Valley (6)

Candidates

GRECO, Andrew

JORDAN, Pamela Barbara

WATHEN, Thomas William

No further nominations were accepted

Delegate to Branch Conference - South Gippsland (3)

Candidate

JONES, Brenda Joy

No further nominations were accepted

Delegate to Branch Conference - West Gippsland (3)

No nominations were received

Delegate to Branch Conference - Primary Allied Staff Sub Sector (26)

No nominations were received

As the number of nominations accepted did not exceed the number of positions to be filled, I declare the above candidates elected.

Tony King
Returning Officer

16 May 2007

GPO Box 4382
Melbourne VIC 3001

Level 22, Casselden Place
2 Lonsdale Street
Melbourne VIC 3000

Reference: VIC 06/163 - S1E1

Contact: Tony King
Phone: (03) 9285 7146
Facsimile: (03) 9285 7149
E-mail: tony.king@aec.gov.au

Mr Brian Henderson
Branch Secretary
Australian Education Union – Victorian Branch
PO Box 363
ABBOTSFORD VIC 3067

Dear Mr Henderson

**Australian Education Union
Delegates to Branch Conference - Recall
E2006/241**

I refer to my letter of 2 November 2006 concerning the arrangements for me to conduct an election for various positions in your Organisation and wish to advise that a ballot will not be necessary.

My declaration of the uncontested offices is attached.

The election is now complete.

Yours sincerely

Tony King
Returning Officer

28 June 2007

cc all uncontested nominees

**AUSTRALIAN EDUCATION UNION – VICTORIAN BRANCH
EARLY CHILDHOOD SECTOR - RECALL**

DECLARATION OF RESULTS FOR UNCONTESTED OFFICES

Results of the election for the following offices conducted in accordance with the provisions of the Workplace Relations Act 1996 and the rules of the organisation.

E2006/241

Early Childhood Sector

Delegate to Branch Conference - South East (10)

Candidate

MENZ, Martel

No further nominations were accepted

Delegate to Branch Conference - North West (5)

No nominations were received

Delegate to Branch Conference - Goulburn

No nomination was received

Delegate to Branch Conference - Barwon (2)

No nominations were received

Delegate to Branch Conference - Loddon

No nomination was received

Delegate to Branch Conference - CHW

No nomination was received

Delegate to Branch Conference - Gippsland

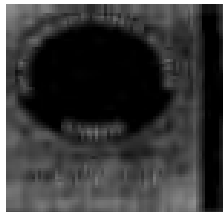
Candidate

BRADY, Lynne

As the number of nominations accepted did not exceed the number of positions to be filled, I declare the above candidates elected.

Tony King
Returning Officer

16 May 2007



AUSTRALIAN EDUCATION UNION

Victorian Branch

112 Trenerry Crescent Abbotsford 3067
PO Box 363 Abbotsford 3067

telephone: 03 9417 2822; 1800 013 379 fax: 1300 658 078 web: www.aeuvic.asn.au email: melbourne@aeuvic.asn.au

3 October 2006

Ken Ophel
Australian Industrial Registry
GPO Box 1994S
MELBOURNE VIC 3001

E 2006/241

Dear Ken

I, Brian John Henderson, Branch Secretary of the Australian Education Union Victorian Branch, am authorised to lodge the following prescribed information in relation to elections in the Australian Education Union Victorian Branch. The information is being lodged under subsection 189(1) of the RAO Schedule.

1. **The offices and positions in respect of which an election is required are:**
Delegates to Branch Conference, 2007.
2. **The reason for the elections:**
Consistent with Rule 51 (1), delegates to Branch Conference take office on the declaration of his/her election and hold office for one year or until his/her successor takes office.
3. **The electorates:**
Rule 4 (1) sets out the various electorates:
 - (b) delegates elected by and from the financial members of the Early Childhood Sector in a region or group of regions;
 - (c) delegates elected by and from the financial members of the Primary Sector in each region;
 - (d) delegates elected by and from financial members of the Primary Allied Staff Sub-sector;
 - (e) delegates elected by and from the financial members of the Secondary Sector in each region;
 - (f) delegates elected by and from financial members of the Secondary Allied Staff Sub-sector;
 - (g) delegates elected by and from the financial members of the TAFE Colleges Sub-sector;
 - (h) delegates elected by and from all financial members of the Disability Services Sub-sector;
 - (i) delegates elected by and from all financial members of the Adult Migrant Education Service Sub-sector.

The attachments detail the calculation of delegate entitlements consistent with Rule 4 (2) and 4 (3).

4. The dates and times for the opening and closing of nominations are:

The dates and times for the opening and closing of nominations will be determined by the Returning Officer from the Australian Electoral Commission having regard to Rule 47 (5).

I would suggest the Returning Officer consider the following:

13 February 2007	Nominations open.
26 March 2007	Nominations close.
10 April 2007	If necessary, open ballots.
27 April 2007	Close ballots.

5. Roll of voters shall close:

In accordance with Rule 57 (2A), the roll of voters closes 7 days before the opening of nominations.

6. Voting system:

The voting system to be used in the conduct of the elections is direct election by and from the financial members of the relevant Sectors or Sub-sectors.

7. Contact

The person to contact for lists of members and other necessary information in relation to this election is:

Brian Henderson
Branch Secretary
Australian Education Union Victorian Branch
PO Box 363
Abbotsford Vic 3067

Direct Phone: (03) 9418 4801
Fax: (03) 9417 0422
E-mail: bhenderson@aeuvic.asn.au

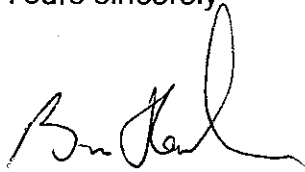
8. Additional Information

I wish to report that there were members with no recorded workplace that had to be distributed.

	No. With No Recorded Workplace
Early Childhood	19
TAFE	92
Disability Services	20
AMES	9
Primary	248
Secondary	220

These numbers were allocated arbitrarily to maintain the previous year's entitlement for each region/institution unless there had been a dramatic decline in members.

Yours sincerely

A handwritten signature in black ink, appearing to read 'Brian Henderson', with a stylized flourish at the end.

Brian Henderson
Branch Secretary

AUSTRALIAN EDUCATION UNION VICTORIAN BRANCH
2007 ANNUAL CONFERENCE DELEGATES

(BASED ON FIGURES - 30/06/06)

	<u>No. Members</u>	<u>No. Delegates</u>
EARLY	1,044 ÷ 50	21
PRIMARY	14,007 ÷ 50	280
PRIMARY ALLIED	1,319 ÷ 50	26
SECONDARY	12,194 ÷ 50	244
SECONDARY ALLIED	731 ÷ 50	15
TAFE	2,312 ÷ 50	46
DISABILITY	775 ÷ 50	16
AMES	101 ÷ 50	2
TOTAL	32,483	650

**AEU VICTORIAN BRANCH
CONFERENCE DELEGATE ENTITLEMENT 2007 - REGIONS**

**PRIMARY SECTOR & PRIMARY ALLIED STAFF SUB-SECTOR
(Based in accordance with rules on membership figures at 30 June 2006)**

REGION	NUMBER OF MEMBERS	NUMBER OF DELEGATES
INNER CITY	525	11
LATROBE/PLENTY	470	9
DIAMOND VALLEY	275	6
WERRIBEE	330	7
INNER WEST	655	13
MARIBYRNONG	625	13
BROADMEADOWS	492	10
SUNBURY	215	4
MELTON	220	4
GREATER WAVERLEY	546	11
INNER EAST	368	7
DONCASTER/WARRINGAL	489	10
OUTER EASTERN	517	10
KNOX/DANDENONG RANGES	644	13
YARRA VALLEY	159	3
SOUTH EASTERN	419	8
BERWICK / PAKENHAM / CRANBOURNE	624	12
WONTHAGGI	146	3
LONGBEACH / MOORABBIN / PRAHRAN	952	19
FRANKSTON	467	9
PENINSULA	419	8
GEELONG	540	11
COLAC	124	2
HAMILTON/PORTLAND	115	2
WARRNAMBOOL	246	5
BALLARAT	453	9

CONFERENCE DELEGATE ENTITLEMENT 2007 - REGIONS
PRIMARY SECTOR & PRIMARY ALLIED STAFF SUB-SECTOR (Contd.)

REGION	NUMBER OF MEMBERS	NUMBER OF DELEGATES
STAWELL	89	2
HORSHAM	131	3
SOUTH GIPPSLAND	132	3
WEST GIPPSLAND	140	3
LATROBE VALLEY	324	6
EAST GIPPSLAND	177	4
SALE	129	3
BENALLA	144	3
SEYMOUR	121	2
SHEPPARTON	294	6
WODONGA	170	3
WANGARATTA	167	3
BENDIGO	140	3
MARYBOROUGH	188	4
CASTLEMAINE/KYNETON	160	3
BENDIGO / ECHUCA / KYABRAM	198	4
SWAN HILL	79	2
MILDURA	189	4
TOTAL PRIMARY	14,007	280
PRIMARY ALLIED STAFF SUB-SECTOR	1319	26

**AEU VICTORIAN BRANCH
 CONFERENCE DELEGATE ENTITLEMENT 2007 - REGIONS**

**PRIMARY SECTOR & PRIMARY ALLIED STAFF SUB-SECTOR
 (Based in accordance with rules on membership figures at 30 June 2006)**

REGION	NUMBER OF DELEGATES
INNER CITY	11
LATROBE/PLENTY	9
DIAMOND VALLEY	6
WERRIBEE	7
INNER WEST	13
MARIBYRNONG	13
BROADMEADOWS	10
SUNBURY	4
MELTON	4
GREATER WAVERLEY	11
INNER EASTERN	7
DONCASTER/WARRINGAL	10
OUTER EASTERN	10
KNOX/DANDENONG RANGES	13
YARRA VALLEY	3
SOUTH EASTERN	8
BERWICK / PAKENHAM / CRANBOURNE	12
WONTHAGGI	3
LONGBEACH/MOORABBIN/PRAHRAN	19
FRANKSTON	9
PENINSULA	8
GEELONG	11
COLAC	2

CONFERENCE DELEGATE ENTITLEMENT 2007 - REGIONS
 PRIMARY SECTOR & PRIMARY ALLIED STAFF SUB-SECTOR (Contd.)

REGION	NUMBER OF DELEGATES
HAMILTON/PORTLAND	2
WARRNAMBOOL	5
BALLARAT	9
STAWELL	2
HORSHAM	3
SOUTH GIPPSLAND	3
WEST GIPPSLAND	3
LATROBE VALLEY	6
E AST GIPPSLAND	4
SALE	3
BENALLA	3
SEYMOUR	2
SHEPPARTON	6
WODONGA	3
WANGARATTA	3
BENDIGO	3
MARYBOROUGH	4
CASTLEMAINE/KYNETON	3
BENDIGO / ECHUCA / KYABRAM	4
SWAN HILL	2
MILDURA	4
TOTAL PRIMARY	280
PRIMARY ALLIED STAFF SUB-SECTOR	26

**AEU VICTORIAN BRANCH
CONFERENCE DELEGATE ENTITLEMENT 2007 - REGIONS**

**SECONDARY SECTOR & SECONDARY ALLIED STAFF SUB-SECTOR
(Based in accordance with rules on membership figures at 30 June 2006)**

REGION	NUMBER OF MEMBERS	NUMBER OF DELEGATES
INNER CITY	645	13
LATROBE/PLENTY	510	10
DIAMOND VALLEY	307	6
WERRIBEE	239	5
INNER WEST	614	12
MARIBYRNONG	565	11
BROADMEADOWS	377	8
SUNBURY	148	3
MELTON	180	4
GREATER WAVERLEY	483	10
INNER EAST	291	6
DONCASTER/WARRINGAL	498	10
OUTER EASTERN	440	9
KNOX/DANDENONG RANGES	464	9
YARRA VALLEY	81	2
SOUTH EASTERN	419	8
BERWICK / PAKENHAM / CRANBOURNE	522	10
WONTHAGGI	123	2
LONGBEACH / MOORABBIN / PRAHRAN	686	14
FRANKSTON	341	7
PENINSULA	218	4
GEELONG	514	10
COLAC	110	2
HAMILTON/PORTLAND	112	2
WARRNAMBOOL	241	5
BALLARAT	273	5
STAWELL	82	2

CONFERENCE DELEGATE ENTITLEMENT 2007 - REGIONS
SECONDARY SECTOR & SECONDARY ALLIED STAFF SUB-SECTOR (Contd.)

REGION	NUMBER OF MEMBERS	NUMBER OF DELEGATES
HORSHAM	167	3
SOUTH GIPPSLAND	138	3
WEST GIPPSLAND	141	3
LATROBE VALLEY	227	5
EAST GIPPSLAND	164	3
SALE	112	2
BENALLA	138	3
SEYMOUR	130	3
SHEPPARTON	261	5
WODONGA	167	3
WANGARATTA	176	4
BENDIGO	184	4
MARYBOROUGH	145	3
CASTLEMAINE/KYNETON	107	2
BENDIGO / ECHUCA / KYABRAM	232	5
SWAN HILL	50	1
MILDURA	172	3
TOTAL PRIMARY	12,194	244
PRIMARY ALLIED STAFF SUB-SECTOR	731	15

**AEU VICTORIAN BRANCH
 CONFERENCE DELEGATE ENTITLEMENT 2007 - REGIONS**

**SECONDARY SECTOR & SECONDARY ALLIED STAFF SUB-SECTOR
 (Based in accordance with rules on membership figures at 30 June 2006)**

REGION	NUMBER OF DELEGATES
INNER CITY	13
LATROBE/PLENTY	10
DIAMOND VALLEY	6
WERRIBEE	5
INNER WEST	12
MARIBYRNONG	11
BROADMEADOWS	8
SUNBURY	3
MELTON	4
GREATER WAVERLEY	10
INNER EASTERN	6
DONCASTER/WARRINGAL	10
OUTER EASTERN	9
KNOX/DANDENONG RANGES	9
YARRA VALLEY	2
SOUTH EASTERN	8
BERWICK / PAKENHAM / CRANBOURNE	10
WONTHAGGI	2
LONGBEACH/MOORABBIN/PRAHRAN	14
FRANKSTON	7
PENINSULA	4
GEELONG	10
COLAC	2

CONFERENCE DELEGATE ENTITLEMENT 2007 - REGIONS
 SECONDARY SECTOR & SECONDARY ALLIED STAFF SUB-SECTOR (Contd.)

REGION	NUMBER OF DELEGATES
HAMILTON/PORTLAND	2
WARRNAMBOOL	5
BALLARAT	5
STAWELL	2
HORSHAM	3
SOUTH GIPPSLAND	3
WEST GIPPSLAND	3
LATROBE VALLEY	5
EAST GIPPSLAND	3
SALE	2
BENALLA	3
SEYMOUR	3
SHEPPARTON	5
WODONGA	3
WANGARATTA	4
BENDIGO	4
MARYBOROUGH	3
CASTLEMAINE/KYNETON	2
BENDIGO / ECHUCA / KYABRAM	5
SWAN HILL	1
MILDURA	3
TOTAL SECONDARY	244
SECONDARY ALLIED STAFF SUB-SECTOR	15

**AEU VICTORIAN BRANCH
 CONFERENCE DELEGATE ENTITLEMENT 2007**

EARLY CHILDHOOD SECTOR

(Based in accordance with rules on membership figures at 30 June 2006)

GROUP OF REGIONS	NUMBER OF MEMBERS	NUMBER OF DELEGATES
<u>SOUTH EAST</u>		
DONCASTER/WARRINGAL	56	
INNER EASTERN	38	
GREATER WAVERLEY	39	
OUTER EASTERN	45	
YARRA VALLEY	5	
KNOX/DANDENONG RANGES	52	
BERWICK/PAKENHAM	40	
WONTHAGGI	12	
SOUTH EASTERN	28	
LONGBEACH/MOORABBIN/PRAHRAN	77	
FRANKSTON	44	
PENINSULA	39	
	475	10
<u>NORTH WEST</u>		
DIAMOND VALLEY	21	
LATROBE/PLENTY	35	
INNER CITY	54	
INNER WEST	43	
WERRIBEE	30	
MARIBYRNONG	36	
BROADMEADOWS	28	
SUNBURY	6	
MELTON	16	
	269	5
<u>GOULBURN</u>		
BENALLA	10	
SEYMOUR	13	
SHEPPARTON	18	
WODONGA	6	
WANGARATTA	12	
	59	1
<u>BARWON</u>		
GEELONG	58	
COLAC	6	
HAMILTON/PORTLAND	7	
WARRNAMBOOL	16	
	87	2

**AEU VICTORIAN BRANCH-CONFERENCE DELEGATE ENTITLEMENT 2007
EARLY CHILDHOOD SECTOR (contd..)**

GROUP OF REGIONS	NUMBER OF MEMBERS	NUMBER OF DELEGATES
<u>GIPPSLAND</u> WEST GIPPSLAND SOUTH GIPPSLAND LATROBE VALLEY SALE EAST GIPPSLAND	17 12 11 8 6 54	1
<u>LODDON</u> BENDIGO MARYBOROUGH CASTLEMAINE/KYNETON BENDIGO/ECHUCA SWAN HILL MILDURA	7 6 6 7 4 24 54	1
<u>CHW</u> BALLARAT STAWELL HORSHAM	28 6 12 46	1
TOTAL	1,044	21

AEU VICTORIAN BRANCH

CONFERENCE DELEGATE ENTITLEMENT 2007

TAFE AND ADULT PROVISION SECTOR

(Based in accordance with rules on membership figures at 30 June 2006)

INSTITUTION	NO. OF MEMBERS	NO. OF DELEGATES
UNIVERSITY OF BALLARAT- (TAFE DIVISION)	94	2
BOX HILL INSTITUTE OF TAFE	174	3
BENDIGO REGIONAL INSTITUTE OF TAFE	74	1
CHISHOLM INSTITUTE OF TAFE	265	5
CENTRAL GIPPSLAND INSTITUTE OF TAFE	80	2
EAST GIPPSLAND INSTITUTE OF TAFE	42	1
GORDON INSTITUTE OF TAFE	152	3
GOULBURN OVENS INSTITUTE OF TAFE	91	2
HOLMESGLEN INSTITUTE OF TAFE	140	3
KANGAN/BATMAN INSTITUTE OF TAFE	192	4
NORTHERN MELBOURNE INSTITUTE OF TAFE	197	4
RMIT University- (TAFE DIVISION)	209	4
SOUTH WEST INSTITUTE OF TAFE	61	1
SUNRAYSIA INSTITUTE OF TAFE	33	1
SWINBURNE UNIVERSITY OF TECHNOLOGY-(TAFE DIVISION)	162	3
VICTORIAN UNIVERSITY OF TECHNOLOGY-(TAFE DIVISION)	242	5
WILLIAM ANGLISS INSTITUTE OF TAFE	55	1
WODONGA INSTITUTE OF TAFE	49	1
TAFE INSTITUTES TOTAL	2312	46
DISABILITY SERVICES SUB-SECTOR TOTAL	775	16
AMES SUB SECTOR	101	2
TOTAL	3188	64

Workplace Relations Act 1996
s.189 of Schedule 1 - arrangement for conduct of an election

Australian Education Union
(E2006/241)

T. NASSIOS
DEPUTY INDUSTRIAL REGISTRAR

MELBOURNE, 31 OCTOBER 2006

Arrangement for conduct of election.

DECISION

[1] On 6 October 2006 the Victorian Branch of the abovenamed organisation lodged in the Industrial Registry prescribed information in relation to an election for the following offices:

Delegates to Branch Conference (650) [as listed in Attachment A]

[2] I am satisfied that an election for the abovenamed offices is required to be held under the rules of the organisation and, under subsection 189(3) of Schedule 1 of the Workplace Relations Act 1996, I am making arrangements for the conduct of the election by the Australian Electoral Commission.



Attachment A

AUSTRALIAN EDUCATION UNION VICTORIAN BRANCH

2007 ANNUAL CONFERENCE DELEGATES

(BASED ON FIGURES - 30/06/06)

	<u>No. Members</u>	<u>No. Delegates</u>
EARLY	1,044 ÷ 50	21
PRIMARY	14,007 ÷ 50	280
PRIMARY ALLIED	1,319 ÷ 50	26
SECONDARY	12,194 ÷ 50	244
SECONDARY ALLIED	731 ÷ 50	15
TAFE	2,312 ÷ 50	46
DISABILITY	775 ÷ 50	16
AMES	101 ÷ 50	2
TOTAL	32,483	650

**AEU VICTORIAN BRANCH
CONFERENCE DELEGATE ENTITLEMENT 2007 - REGIONS**

**PRIMARY SECTOR & PRIMARY ALLIED STAFF SUB-SECTOR
(Based in accordance with rules on membership figures at 30 June 2006)**

REGION	NUMBER OF MEMBERS	NUMBER OF DELEGATES
INNER CITY	525	11
LATROBE/PLENTY	470	9
DIAMOND VALLEY	275	6
WERRIBEE	330	7
INNER WEST	655	13
MARIBYRNONG	625	13
BROADMEADOWS	492	10
SUNBURY	215	4
MELTON	220	4
GREATER WAVERLEY	546	11
INNER EAST	368	7
DONCASTER/WARRINGAL	489	10
OUTER EASTERN	517	10
KNOX/DANDENONG RANGES	644	13
YARRA VALLEY	159	3
SOUTH EASTERN	419	8
BERWICK / PAKENHAM / CRANBOURNE	624	12
WONTHAGGI	146	3
LONGBEACH / MOORABBIN / PRAHRAN	952	19
FRANKSTON	467	9
PENINSULA	419	8
GEELONG	540	11
COLAC	124	2
HAMILTON/PORTLAND	115	2
WARRNAMBOOL	246	5
BALLARAT	453	9

**CONFERENCE DELEGATE ENTITLEMENT 2007 - REGIONS
PRIMARY SECTOR & PRIMARY ALLIED STAFF SUB-SECTOR (Contd.)**

REGION	NUMBER OF MEMBERS	NUMBER OF DELEGATES
STAWELL	89	2
HORSHAM	131	3
SOUTH GIPPSLAND	132	3
WEST GIPPSLAND	140	3
LATROBE VALLEY	324	6
EAST GIPPSLAND	177	4
SALE	129	3
BENALLA	144	3
SEYMOUR	121	2
SHEPPARTON	294	6
WODONGA	170	3
WANGARATTA	167	3
BENDIGO	140	3
MARYBOROUGH	188	4
CASTLEMAINE/KYNETON	160	3
BENDIGO / ECHUCA / KYABRAM	198	4
SWAN HILL	79	2
MILDURA	189	4
TOTAL PRIMARY	14,007	280
PRIMARY ALLIED STAFF SUB-SECTOR	1319	26

**AEU VICTORIAN BRANCH
 CONFERENCE DELEGATE ENTITLEMENT 2007 - REGIONS**

**PRIMARY SECTOR & PRIMARY ALLIED STAFF SUB-SECTOR
 (Based in accordance with rules on membership figures at 30 June 2006)**

REGION	NUMBER OF DELEGATES
INNER CITY	11
LATROBE/PLENTY	9
DIAMOND VALLEY	6
WERRIBEE	7
INNER WEST	13
MARIBYRNONG	13
BROADMEADOWS	10
SUNBURY	4
MELTON	4
GREATER WAVERLEY	11
INNER EASTERN	7
DONCASTER/WARRINGAL	10
OUTER EASTERN	10
KNOX/DANDENONG RANGES	13
YARRA VALLEY	3
SOUTH EASTERN	8
BERWICK / PAKENHAM / CRANBOURNE	12
WONTHAGGI	3
LONGBEACH/MCORABBIN/PRAHRAN	19
FRANKSTON	9
PENINSULA	8
GEELONG	11
COLAC	2

CONFERENCE DELEGATE ENTITLEMENT 2007 - REGIONS
 PRIMARY SECTOR & PRIMARY ALLIED STAFF SUB-SECTOR (Contd.)

REGION	NUMBER OF DELEGATES
HAMILTON/PORTLAND	2
WARRNAMBOOL	5
BALLARAT	9
STAWELL	2
HORSHAM	3
SOUTH GIPPSLAND	3
WEST GIPPSLAND	3
LATROBE VALLEY	6
E AST GIPPSLAND	4
SALE	3
BENALLA	3
SEYMOUR	2
SHEPPARTON	6
WODONGA	3
WANGARATTA	3
BENDIGO	3
MARYBOROUGH	4
CASTLEMAINE/KYNETON	3
BENDIGO / ECHUCA / KYABRAM	4
SWAN HILL	2
MILDURA	4
TOTAL PRIMARY	280
PRIMARY ALLIED STAFF SUB-SECTOR	26

**AEU VICTORIAN BRANCH
CONFERENCE DELEGATE ENTITLEMENT 2007 - REGIONS**

**SECONDARY SECTOR & SECONDARY ALLIED STAFF SUB-SECTOR
(Based in accordance with rules on membership figures at 30 June 2006)**

REGION	NUMBER OF MEMBERS	NUMBER OF DELEGATES
INNER CITY	645	13
LATROBE/PLENTY	510	10
DIAMOND VALLEY	307	6
WERRIBEE	239	5
INNER WEST	614	12
MARIBYRNONG	565	11
BROADMEADOWS	377	8
SUNBURY	148	3
MELTON	180	4
GREATER WAVERLEY	483	10
INNER EAST	291	6
DONCASTER/WARRINGAL	498	10
OUTER EASTERN	440	9
KNOX/DANDENONG RANGES	464	9
YARRA VALLEY	81	2
SOUTH EASTERN	419	8
BERWICK / PAKENHAM / CRANBOURNE	522	10
WONTHAGGI	123	2
LONGBEACH / MOORABBIN / PRAHRAN	686	14
FRANKSTON	341	7
PENINSULA	218	4
GEE LONG	514	10
COLAC	110	2
HAMILTON/PORTLAND	112	2
WARRNAMBOOL	241	5
BALLARAT	273	5
STAWELL	82	2

CONFERENCE DELEGATE ENTITLEMENT 2007 - REGIONS
SECONDARY SECTOR & SECONDARY ALLIED STAFF SUB-SECTOR (Contd.)

REGION	NUMBER OF MEMBERS	NUMBER OF DELEGATES
HORSHAM	167	3
SOUTH GIPPSLAND	138	3
WEST GIPPSLAND	141	3
LATROBE VALLEY	227	5
EAST GIPPSLAND	164	3
SALE	112	2
BENALLA	138	3
SEYMOUR	130	3
SHEPPARTON	261	5
WODONGA	167	3
WANGARATTA	176	4
BENDIGO	184	4
MARYBOROUGH	145	3
CASTLEMAINE/KYNETON	107	2
BENDIGO / ECHUCA / KYABRAM	232	5
SWAN HILL	50	1
MILDURA	172	3
TOTAL PRIMARY	12,194	244
PRIMARY ALLIED STAFF SUB-SECTOR	731	15

Secondary

CONFERENCE DELEGATE ENTITLEMENT 2007 - REGIONS
 SECONDARY SECTOR & SECONDARY ALLIED STAFF SUB-SECTOR (Contd.)

**AEU VICTORIAN BRANCH
 CONFERENCE DELEGATE ENTITLEMENT 2007 - REGIONS**

**SECONDARY SECTOR & SECONDARY ALLIED STAFF SUB-SECTOR
 (Based in accordance with rules on membership figures at 30 June 2006)**

REGION	NUMBER OF DELEGATES
INNER CITY	13
LATROBE/PLENTY	10
DIAMOND VALLEY	6
WERRIBEE	5
INNER WEST	12
MARIBYRNONG	11
BROADMEADOWS	8
SUNBURY	3
MELTON	4
GREATER WAVERLEY	10
INNER EASTERN	6
DONCASTER/WARRINGAL	10
OUTER EASTERN	9
KNOX/DANDENONG RANGES	9
YARRA VALLEY	2
SOUTH EASTERN	8
BERWICK / PAKENHAM / CRANBOURNE	10
WONTHAGGI	2
LONGBEACH/MOORABBIN/PRAHRAN	14
FRANKSTON	7
PENINSULA	4
GEELONG	10
COLAC	2

CONFERENCE DELEGATE ENTITLEMENT 2007 - REGIONS
 SECONDARY SECTOR & SECONDARY ALLIED STAFF SUB-SECTOR (Contd.)

REGION	NUMBER OF DELEGATES
HAMILTON/PORTLAND	2
WARRNAMBOOL	5
BALLARAT	5
STAWELL	2
HORSHAM	3
SOUTH GIPPSLAND	3
WEST GIPPSLAND	3
LATROBE VALLEY	5
EAST GIPPSLAND	3
SALE	2
BENALLA	3
SEYMOUR	3
SHEPPARTON	5
WODONGA	3
WANGARATTA	4
BENDIGO	4
MARYBOROUGH	3
CASTLEMAINE/KYNETON	2
BENDIGO / ECHUCA / KYABRAM	5
SWAN HILL	1
MILDURA	3
TOTAL SECONDARY	244
SECONDARY ALLIED STAFF SUB-SECTOR	15

AEU VICTORIAN BRANCH-CONFERENCE DELEGATE ENTITLEMENT 2007
EARLY CHILDHOOD SECTOR (contd..)

AEU VICTORIAN BRANCH
CONFERENCE DELEGATE ENTITLEMENT 2007

EARLY CHILDHOOD SECTOR

(Based in accordance with rules on membership figures at 30 June 2006)

GROUP OF REGIONS	NUMBER OF MEMBERS	NUMBER OF DELEGATES
<u>SOUTH EAST</u>		
DONCASTER/WARRINGAL	56	
INNER EASTERN	38	
GREATER WAVERLEY	39	
OUTER EASTERN	45	
YARRA VALLEY	5	
KNOX/DANDENONG RANGES	52	
BERWICK/PAKENHAM	40	
WONTHAGGI	12	
SOUTH EASTERN	28	
LONGBEACH/MOORABBIN/PRAHRAN	77	
FRANKSTON	44	
PENINSULA	39	
	475	10
<u>NORTH WEST</u>		
DIAMOND VALLEY	21	
LATROBE/PLENTY	35	
INNER CITY	54	
INNER WEST	43	
WERRIBEE	30	
MARIBYRNONG	36	
BROADMEADOWS	28	
SUNBURY	6	
MELTON	16	
	269	5
<u>GOULBURN</u>		
BENALLA	10	
SEYMOUR	13	
SHEPPARTON	18	
WODONGA	6	
WANGARATTA	12	
	59	1
<u>BARWON</u>		
GEE LONG	58	
COLAC	6	
HAMILTON/PORTLAND	7	
WARRNAMBOOL	16	
	87	2

**AEU VICTORIAN BRANCH-CONFERENCE DELEGATE ENTITLEMENT 2007
EARLY CHILDHOOD SECTOR (contd..)**

GROUP OF REGIONS	NUMBER OF MEMBERS	NUMBER OF DELEGATES
<u>GIPPSLAND</u> WEST GIPPSLAND SOUTH GIPPSLAND LATROBE VALLEY SALE EAST GIPPSLAND	17 12 11 8 6 54	1
<u>LODDON</u> BENDIGO MARYBOROUGH CASTLEMAINE/KYNETON BENDIGO/ECHUCA SWAN HILL MILDURA	7 6 6 7 4 24 54	1
<u>CHW</u> BALLARAT STAWELL HORSHAM	28 6 12 46	1
TOTAL	1,044	21

AEU VICTORIAN BRANCH

CONFERENCE DELEGATE ENTITLEMENT 2007

TAFE AND ADULT PROVISION SECTOR

(Based in accordance with rules on membership figures at 30 June 2006)

INSTITUTION	NO. OF MEMBERS	NO. OF DELEGATES
UNIVERSITY OF BALLARAT- (TAFE DIVISION)	94	2
BOX HILL INSTITUTE OF TAFE	174	3
BENDIGO REGIONAL INSTITUTE OF TAFE	74	1
CHISHOLM INSTITUTE OF TAFE	265	5
CENTRAL GIPPSLAND INSTITUTE OF TAFE	80	2
EAST GIPPSLAND INSTITUTE OF TAFE	42	1
GORDON INSTITUTE OF TAFE	152	3
GOULBURN OVENS INSTITUTE OF TAFE	91	2
HOLMESGLEN INSTITUTE OF TAFE	140	3
KANGAN/BATMAN INSTITUTE OF TAFE	192	4
NORTHERN MELBOURNE INSTITUTE OF TAFE	197	4
RMIT University- (TAFE DIVISION)	209	4
SOUTH WEST INSTITUTE OF TAFE	61	1
SUNRAYSIA INSTITUTE OF TAFE	33	1
SWINBURNE UNIVERSITY OF TECHNOLOGY-(TAFE DIVISION)	162	3
VICTORIAN UNIVERSITY OF TECHNOLOGY-(TAFE DIVISION)	242	5
WILLIAM ANGLISS INSTITUTE OF TAFE	55	1
WODONGA INSTITUTE OF TAFE	49	1
TAFE INSTITUTES TOTAL	2312	46
DISABILITY SERVICES SUB-SECTOR TOTAL	775	16
AMES SUB SECTOR	101	2
TOTAL	3188	64

PR975479

Workplace Relations Act 1996
s.189 of Schedule 1 - arrangement for conduct of an election

Australian Education Union
(E2006/241)

T. NASSIOS
DEPUTY INDUSTRIAL REGISTRAR

MELBOURNE, 22 DECEMBER 2006

Arrangement for conduct of election.

AMENDING DECISION

On 31 October 2006 I made arrangements under s189 of Schedule 1 of the *Workplace Relations Act 1996*, for elections for Delegates to Branch Conference in the Victorian Branch of the abovenamed organisation.

I was informed by the organisation on 21 December 2006, that the prescribed information in relation to a delegate from the Early Childhood Sector representing the Loddon group of regions contained an error, namely that the reference to Bendigo/Echuca should have read Bendigo/Echuca/Kyabram.

I am satisfied that an election is required to be held under the rules of the organisation for the office as amended above.

Attachment A to my decision of 31 October 2006 is amended accordingly.



Printed by authority of the Commonwealth Government Printer