



Australian Government

Australian Industrial Registry

11 Exhibition Street
Melbourne, VIC 3000
GPO Box 1994, Melbourne, VIC 3001
Telephone: (03) 8661 7989
Fax: (03) 9655 0410

Dr Alan Needham
President
National Tertiary Education Industry Union
Edith Cowan University Branch
Room 435, Building 8
100 Joondalup Drive
JOONDALUP WA 6027

By email: nteu@ecu.edu.au

Dear Dr Needham

Re: Financial Reports for year ended 30 June 2006 – National Tertiary Education Industry Union – Edith Cowan University Branch – FR2006/275

I acknowledge receipt of the financial reports of the National Tertiary Education Industry Union – Edith Cowan University Branch for the year ended 30 June 2006 and the Authorised Officer's Certificate dated 15 December 2006. The documents were lodged in the Industrial Registry on 12 and 20 December 2006 respectively.

The documents have been filed.

Although the documents have been filed, I would like to make some comments to assist you when you next prepare the financial reports. You *do not* need to take any further action in respect of the financial reports already lodged.

1. Operating Report

Section 254(2)(b) of Schedule 1 of the *Workplace Relations Act 1996* (RAO Schedule) provides that the operating report must give details of any significant changes in the reporting unit's financial affairs during the year. If there are no significant changes a statement to that effect should be included. I note this was brought to the branch's attention in our letter dated 7 February 2006. Please ensure this is done for future financial reports.

2. Auditor's Report

Qualifications

In future financial years please make sure the Auditor's Report provide *details of the Auditor's qualifications* to confirm he or she is an approved auditor as defined by s.256 of RAO Schedule and Regulation 4 of the *Workplace Relations (Registration and Accountability of Organisations) Regulations 2003* (RAO Regulations).

Regulation 4 defines an approved auditor as a person who is a member of CPA Australia, The Institute of Chartered Accountants in Australia or the National Institute of Accountants *and* holds a current Public Practice Certificate. The individual auditor signing off on the report should provide details of which professional body he or she is a member of and whether he or she holds a current Public Practice Certificate.

Use of a disclaimer on the special purpose report comprising of the Statement of Income & Expenditure

The financial reports for the year ended 30 June 2006 provided some of the expenditure information under the cover of a disclaimer in which the auditor stated: *'No audit or review has been performed and accordingly no assurance is expressed. . . We do not accept responsibility to any other person for the contents of the special purpose financial report.'*

This approach is not consistent with the requirements of the RAO Schedule.

The branch and its auditor must ensure, in future financial years, the following expenditure information is provided in the main body of the accounts and not provided under a disclaimer:

- Affiliation fees or subscriptions to political parties or industrial bodies
- Capitation Fees (contributions to the National Office of the organisation)
- Grants or Donations
- Legal costs
- Levies
- Conference Expenses
- Conferences - Fees/Allowance for attendance
- Employee benefits to *holders of office*, and itemised separately:
- Employee benefits to *employees (other than holders of office)*

The requirement for the inclusion of this information in the accounts is set out in Item 11 of the Reporting Guidelines. Subsection 253(2)(b)(ii) of the RAO Schedule states that the General Purpose Financial Report must include the information required by the Reporting Guidelines.

I note the Income Statement for the year ended 30 June 2006 omitted some expenditure information that was included in the Statement of Income and Expenditure, particularly the grants, conferences expenses and conferences fees. Furthermore the capitation fees and the levies in the Income Statement should have been presented as separate amounts rather than an aggregate.

3. Recovery of Wages Activity

I note that the accounts do not provide any information in relation to any recovery of wages activity.

Where the reporting unit has not undertaken any recovery of wages activity for the financial year a statement by the auditor or by the committee of management to the effect that there was no recovery of wages activity for the financial year would be sufficient.

Please refer to Items 16 to 23, and Item 25(f) of the Reporting Guidelines for the requisite information that must be provided if there was recovery of wages activity.

4. References to Schedule 1B

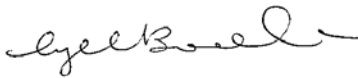
All references to Schedule 1B of the *Workplace Relations Act 1996 (RAO Schedule)* should now be Schedule 1. The change came into effect on 27 March 2006.

5. Electronic Lodgement

I encourage you to take advantage of the electronic lodgement service provided by the Registry for future lodgements. You may register as a user and then lodge your documents via the Electronic Lodgement page of the AIRC website at www.airc.gov.au . Alternatively, you may send an email with the documents attached to RIATeam3@air.gov.au . Please note that the Rules of the Commission allow for electronic signatures to be used, other than for statutory declarations (see sub rule 74A(1)). Where documents are lodged electronically, there will be no need to forward hard copies of the documents.

Should you wish to discuss this letter or if you require further information on the financial reporting requirements of the Act, I can be contacted on (03) 8661 7989 (Wednesday and Thursday).

Yours sincerely,



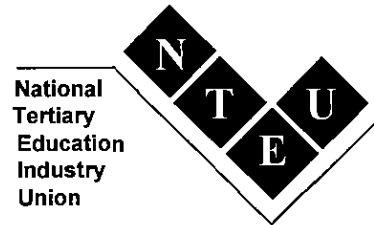
Cynthia Lo-Booth
Statutory Services Branch

20 December 2006

EDITH COWAN UNIVERSITY BRANCH

Room 435/Building 8, 100 Joondalup Drive, Joondalup WA 6027
Telephone: (08) 6304 5969 Facsimile: (08) 6304 5822

Email Address: nteu@ecu.edu.au



15 December 2006

Ms Cynthia Lo-Booth
Statutory Services Branch
Australian Industrial Registry
GPO Box 1994
MELBOURNE VIC 3001

Dear Cynthia

Financial Returns for the year ending 30 June 2006 - National Tertiary Education Industry Union (Edith Cowan University Branch) – FR2006/275

Please find enclosed the Authorised Officer's Certificate which you advised that we had omitted to send when we submitted our financial reports for the year ending 30 June 2006.

Please accept my sincere apologies for this oversight.

Yours sincerely

Dr Alan Needham
President, NTEU (ECU Branch)

Encl.

NATIONAL TERTIARY EDUCATION INDUSTRY UNION
EDITH COWAN UNIVERSITY BRANCH

CERTIFICATE OF SECRETARY OR OTHER AUTHORISED OFFICER
s268 of Schedule 1B *Workplace Relations Act 1996*

I, Alan Dennis Needham, being the President of the Edith Cowan University Branch of the National Tertiary Education Industry Union certify:

- that the documents lodged herewith are copies of the full report, referred to in s268 of the RAO Schedule; and
- that the full report, was provided to members on 17 October 2006; and
- that the full report was presented to a general meeting of members of the reporting unit on 9 November 2006; in accordance with section 266 of the RAO Schedule.

Signature:



Alan Needham (President, NTEU ECU Branch)

Date:

15 December 2006



Australian Government
Australian Industrial Registry

Level 35, 80 Collins Street
Melbourne, VIC 3000
GPO Box 1994, Melbourne, VIC 3001
Telephone: (03) 8661 7777
Fax: (03) 9654 6672

Dr Alan Needham
President
National Tertiary Education Industry Union
Edith Cowan University Branch
Room 435, Building 8
100 Joondalup Drive
JOONDALUP WA 6027

By email: nteu@ecu.edu.au

Dear Dr Needham

Re: Financial Reports for year ended 30 June 2006 – National Tertiary Education Industry Union – Edith Cowan University Branch – FR2006/275

I have received the financial reports of the National Tertiary Education Industry Union – Edith Cowan University Branch for the year ended 30 June 2006. The documents were lodged in the Industrial Registry on 12 December 2006.

The documents have not yet been filed.

The financial reports lodged do not contain an authorised officer's certificate (secretary's certificate). Section 268 of Schedule 1 of the *Workplace Relations Act 1996* (RAO Schedule) and regulation 162 of the *Workplace Relations (Registration and Accountability of Organisations) Regulations 2003* (RAO Regulations) require that an authorised officer's certificate be lodged within 14 days after the general meeting. The matters to which the certificate should address are prescribed by s.268. The certificate must be signed by an office holder, and according to rule 35.2(c) of the organisation rules, the "*Branch President shall . . . sign all documents requiring his or her signature as official head of the Branch*".

An authorised officer's certificate appears in your Branch's financial report for the year ended 30 June 2004 on page 4.

Please organise an authorised officer's certificate be prepared and lodged in our office as soon as possible to enable the prompt filing of the financial reports. Please do not backdate the certificate as the certificate should be dated the same day you have signed the document.

Should you wish to discuss this letter or if you require further information on the financial reporting requirements of the Act, I can be contacted on (03) 8661 7989 (Wednesday and Thursday).

Yours sincerely,

A handwritten signature in black ink, appearing to read 'Cynthia Lo-Booth'.

Cynthia Lo-Booth
Statutory Services Branch

14 December 2006



Australian Government
Australian Industrial Registry

Level 35, 80 Collins Street
Melbourne, VIC 3000
GPO Box 1994, Melbourne, VIC 3001
Telephone: (03) 8661 7777
Fax: (03) 9654 6672

Dr Alan Needham
President
National Tertiary Education Industry Union
Edith Cowan University Branch
Room 435, Building 8
100 Joondalup Drive
JOONDALUP WA 6027

By email: nteu@ecu.edu.au

Dear Dr Needham

Re: Financial Reports for year ended 30 June 2006 – National Tertiary Education Industry Union – Edith Cowan University Branch – FR2006/275

I have received the financial reports of the National Tertiary Education Industry Union – Edith Cowan University Branch for the year ended 30 June 2006. The documents were lodged in the Industrial Registry on 12 December 2006.

The documents have not yet been filed.

The financial reports lodged do not contain an authorised officer's certificate (secretary's certificate). Section 268 of Schedule 1 of the *Workplace Relations Act 1996* (RAO Schedule) and regulation 162 of the *Workplace Relations (Registration and Accountability of Organisations) Regulations 2003* (RAO Regulations) require that an authorised officer's certificate be lodged within 14 days after the general meeting. The matters to which the certificate should address are prescribed by s.268. The certificate must be signed by an office holder, and according to rule 35.2(c) of the organisation rules, the "*Branch President shall . . . sign all documents requiring his or her signature as official head of the Branch*".

An authorised officer's certificate appears in your Branch's financial report for the year ended 30 June 2004 on page 4.

Please organise an authorised officer's certificate be prepared and lodged in our office as soon as possible to enable the prompt filing of the financial reports. Please do not backdate the certificate as the certificate should be dated the same day you have signed the document.

Should you wish to discuss this letter or if you require further information on the financial reporting requirements of the Act, I can be contacted on (03) 8661 7989 (Wednesday and Thursday).

Yours sincerely,

A handwritten signature in black ink, appearing to read 'Cynthia Lo-Booth'.

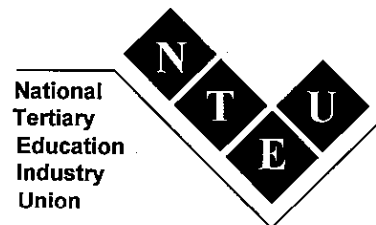
Cynthia Lo-Booth
Statutory Services Branch

14 December 2006

EDITH COWAN UNIVERSITY BRANCH

Room 435/Building 8, 100 Joondalup Drive, Joondalup WA 6027
Telephone: (08) 6304 5969 Facsimile: (08) 6304 5822

Email Address: nteu@ecu.edu.au



7 December 2006

The Industrial Registrar
Australian Industrial Registry
Level 35, Nauru House
80 Collins Street
MELBOURNE VIC 3000

Dear Sir or Madam

Industrial Returns for the National Tertiary Education Industry Union (Edith Cowan University Branch) for the year ending 30 June 2006.

Please find enclosed:

- General Purpose Financial Report.
- Auditor's Report.
- Operating Report signed by Dr Ute Mueller, President of the ECU Branch.
- Committee of Management Statement signed by Dr Ute Mueller, President of the ECU Branch.
- Newsletter (advising members that a copy of the audited financial statements was available, on request, from the Branch Office) and advising them that a hard copy of the financial statements would be presented at the Annual General Meeting (held on 9 November 2006).
- Notice advising members of Section 274 of the Workplace Relations Act 1996.

The meeting held on 9 November 2006 was the Annual General Meeting of Members of the ECU Branch and I confirm that the financial documents were provided to members at that meeting. I also confirm that copies of the financial statements (including reports listed above), were emailed to all members on 17 October 2006.

Please note that Dr Ute Mueller was the Branch President at the time the audit was conducted for the year ending 30 June 2006 and that I was elected as Branch President effective from 1 October 2006.

Yours sincerely

Dr Alan Needham
President, NTEU (ECU Branch)

Encl.

**NATIONAL TERTIARY EDUCATION
INDUSTRY UNION**

EDITH COWAN UNIVERSITY BRANCH

**FINANCIAL REPORT
FOR THE YEAR ENDED 30 JUNE 2006**

CONTENTS

Operating Report

Committee of Management Statement

Income Statement

Balance Sheet

Statement of Cash Flows

Notes to the Financial Statements

Auditor's Report

Compilation Report

Statement of Income and Expenditure

NATIONAL TERTIARY EDUCATION INDUSTRY UNION
EDITH COWAN UNIVERSITY BRANCH

OPERATING REPORT

Number of Members as at 30 June 2006

Four Hundred and Forty Nine (449).

Three Hundred and Forty Two (342) Academic Staff

One Hundred and Seven General Staff (107)

Number of Employees

One (1) Branch Executive Officer – 30 hours per week.

Superannuation Trustees

The superannuation fund used by the NTEU (ECU Branch) is UniSuper, Level 37, 385 Bourke Street, Melbourne Vic 3000 (Phone: 1800 331 685 Website: www.unisuper.com.au).

No officer or member of the NTEU (ECU Branch) is a trustee of a superannuation entity or an exempt public sector superannuation scheme.

No officer or member of the NTEU (ECU Branch) is a director of a company that is a trustee of a superannuation entity or an exempt public sector superannuation scheme.

Principal Activities of the Branch

1. Industrial advice to members by Industrial Officer employed by the NTEU WA Division.
2. Consultation with members regarding Enterprise Bargaining (Round 4).
3. Consultation with Academic Staff Joint Consultative Committee on Enterprise Bargaining (Round 4) and academic matters in general.
4. Consultation with General Staff Joint Consultative Committee on Enterprise Bargaining (Round 4) and general staff matters in general.
5. Negotiation with university management on Enterprise Bargaining (Round 4).
6. Consultation with members and university management regarding university policies and procedures.
7. Union representation on university working parties.
8. Provision of services to members (e.g. legal service).
9. Supervision of branch administration, finance and industrial officer activities.
10. Branch Committee meetings held approximately every six weeks.
11. NTEU national participation in conferences, national strike action, national meetings.
12. Recruitment of new members.
13. Liaison with School Delegates.

Right of Members to Resign

Pursuant to Rule 11 of the NTEU Rules as certified by the Deputy Industrial Registrar on 5 May 2005, members have the right to resign by written notice to the Branch Secretary, and payment of dues by direct debit or credit card is cancelled thereby. Authorising the cancellation of payment of dues by payroll deduction is separate to resignation from the union and is the responsibility of the member. Resignation procedure is advised on the NTEU website www.nteu.org.au and on membership application material.

Membership of the Committee of Management

There are a total of fifteen (15) elected positions on the Committee of Management comprising the President, Vice-President (Academic Staff), Vice-President (General Staff), Secretary, Ordinary Committee Member (Academic Staff), Ordinary Committee Member (General Staff), Ordinary Committee Member (Indigenous) and either (8) Ordinary Committee Members. Elections are held every two years and the term of office runs from 1 October to 30 September. Various changes occur during the term of office as members leave ECU. When a member leaves, their position becomes vacant and can be filled by co-option. Members interested in being co-opted are nominated and the nominations are presented at a Committee of Management Meeting. The co-option of new members onto the Committee of Management has to be endorsed by a majority vote.

The Treasurer is not an elected position but is appointed by the Committee of Management. John May was the Treasurer from 1 July 2005 to the completion of the audit for the 2004/2005 year and then Alan Needham was appointed as Treasurer for the remainder of the reporting period.

Membership of the Committee of Management from 1 July 2005 to 30 June 2006 was as follows:

Name	Position	From	To
President	Ute Mueller	1 July 2005	30 June 2006
Vice-President (Academic)	A/Prof Lyn Bloom	1 July 2005	30 June 2006
Vice-President (General)	Mr Clinton Moore-Crouch	1 July 2005	30 June 2006
Secretary	Dr Alan Needham	1 July 2005	30 June 2006
Treasurer	Mr John May Dr Alan Needham	1 July 2005 8 October 2005	7 October 2005 30 June 2006
Ordinary Committee Member (Academic Staff)	Dr Moira O'Connor	1 July 2005	30 June 2006
Ordinary Committee Member (General Staff)	Kathryn Clarke <i>Position Vacant</i>	29 August 2005 1 July 2005	30 June 2006 28 August 2005
Ordinary Committee Member (Indigenous Member)	Ms Lorna Corbett	1 July 2005	30 June 2006
Ordinary Committee Member	Dr Leisa Armstrong	12 August 2005	30 June 2006
Ordinary Committee Member	Dr Ian Bennett	1 July 2005	30 June 2006
Ordinary Committee Member	Ms Kerry Evans	1 July 2005	30 June 2006
Ordinary Committee Member	Dr Lorna Kaino	1 July 2005	30 June 2006
Ordinary Committee Member	A/Prof Adrienne Kinnear	1 July 2005	30 June 2006
Ordinary Committee Member	Dr Geoff Lummis	1 July 2005	30 June 2006
Ordinary Committee Member	Dr Peter Roberts	12 August 2005	30 June 2006
Ordinary Committee Member	Dr David Wiles	1 July 2005	30 June 2006

As the above table indicates, there were a number of changes to the Committee of Management from 1 July 2005 to 30 June 2006. The changes were as follows:

Treasurer

- John May remained as Treasurer until completion of the 2004/2005 audit (7 October 2005).
- Alan Needham was appointed as Treasurer from 8 October 2005 to 30 September 2006.

Ordinary Committee Member (General Staff)

- Naomi Yellowlees held this position until 30 June 2005 but then left ECU declaring the position vacant.
- Kathryn Clarke was co-opted into this position from 12 August 2005 through to 30 September 2006.

Ordinary Committee Members

- Leisa Armstrong and Peter Roberts were co-opted to this position from 12 August 2005 through to 30 September 2006. These two positions had been vacant for several months.

Signed: Ute Mueller
Dr Ute Mueller (President, NTEU ECU Branch)

Dated: 13/9/06

OPERATING REPORT
NATIONAL TERTIARY EDUCATION INDUSTRY UNION
EDITH COWAN UNIVERSITY BRANCH

COMMITTEE OF MANAGEMENT STATEMENT

On 13 September 2006 the Committee of Management of the National Tertiary Education Industry Union – Edith Cowan University Branch (NTEU-ECU) passed the following resolution in relation to the general purpose financial report (GPFR) of the reporting unit for the financial year ended 30 June 2006.

The Committee of Management declares in relation to the GPFR that in its opinion:

- (a) the financial statements and notes comply with the Australian Accounting Standards;
- (b) the financial statements and notes comply with the reporting guidelines of the Industrial Registrar;
- (c) the financial statements and notes give a true and fair view of the financial performance, financial position and cash flows of the reporting unit for the financial year to which they relate;
- (d) there are reasonable grounds to believe that the reporting unit will be able to pay its debts as and when they become due and payable;
- (e) during the financial year to which the GPFR relates and since the end of that year:
 - (i) meetings of the committee of management were held in accordance with the rules of the organisation including the rules of a branch concerned; and
 - (ii) the financial affairs of the reporting unit have been managed in accordance with the rules of the organisation including the rules of a branch concerned; and
 - (iii) the financial records of the reporting unit have been kept and maintained in accordance with the RAO Schedule and the RAO Regulations; and
 - (iv) the financial records of the reporting unit have been kept, as far as practicable, in a consistent manner to each of the other reporting units of the organisation; and
 - (v) the information sought in any request of a member of the reporting unit or a Registrar duly made under section 272 of the RAO Schedule has been furnished to the member or Registrar; and
 - (vi) no orders have been made by the Commission under Section 273 of the RAO schedule during the period.

For Committee of Management: Dr Ute Mueller

Title of Office held: President

Signature: 

Date: 13 September 2006

NATIONAL TERTIARY EDUCATION INDUSTRY UNION
EDITH COWAN UNIVERSITY BRANCH

INCOME STATEMENT
FOR THE YEAR ENDED 30 JUNE 2006

	Note	2006 \$	2005 \$
Revenue	2	251,423	263,747
NTEU – WA State Division Capitation and Levies		(58,571)	(66,970)
NTEU – National Office Capitation and Levies		(101,633)	(107,388)
Depreciation expense		(3,738)	(3,533)
Time Release for President		(5,000)	(5,000)
Telephone expense		(2,441)	(4,036)
NTEU – National Office Executive Remuneration		(46,984)	(43,288)
Executive Officer Entitlements Provision		(4,578)	(6,242)
NTEU (WA Division) Contribution Levy (Staff Redundancy)		-	(3,000)
Other expenses		(17,373)	(14,449)
Surplus from operations		<u>11,105</u>	<u>9,841</u>

The accompanying notes form part of these financial statements

NATIONAL TERTIARY EDUCATION INDUSTRY UNION
EDITH COWAN UNIVERSITY BRANCH

BALANCE SHEET
AS AT 30 JUNE 2006

	Note	2006	2005
		\$	\$
CURRENT ASSETS			
Cash and cash equivalents	4	42,458	25,987
TOTAL CURRENT ASSETS		42,458	25,987
NON CURRENT ASSETS			
Property, plant and equipment	5	5,254	6,042
TOTAL NON-CURRENT ASSETS		5,254	6,042
TOTAL ASSETS		47,712	32,029
CURRENT LIABILITIES			
Provisions	6	5,466	3,437
TOTAL CURRENT LIABILITIES		5,466	3,437
NON-CURRENT LIABILITIES			
Provisions	6	5,354	2,805
TOTAL NON-CURRENT LIABILITIES		5,354	2,805
TOTAL LIABILITIES		10,820	6,242
NET ASSETS		\$36,892	\$25,787
EQUITY			
Accumulated surplus	7	36,892	25,787
TOTAL EQUITY		\$36,892	\$25,787

The accompanying notes form part of these financial statements.

NATIONAL TERTIARY EDUCATION INDUSTRY UNION
EDITH COWAN UNIVERSITY BRANCH

STATEMENT OF CASH FLOWS
FOR THE YEAR ENDED 30 JUNE 2006

	Note	2006 \$	2005 \$
CASH FLOWS FROM OPERATING ACTIVITIES			
Receipts from members		271,297	283,197
Contributions from ASA-ECU		3,000	6,000
Payments to suppliers and employees		(255,154)	(269,719)
Interest received		277	138
Net cash provided by operating activities	8(b)	19,420	19,616
CASH FLOWS FROM INVESTING ACTIVITIES			
Payment for property, plant and equipment		(2,949)	-
Net cash provided by (used in) investing activities		(2,949)	-
Net increase in cash held		16,471	19,616
Cash at the beginning of the financial year		25,987	6,371
Cash at the end of the financial year	8(a)	42,458	25,987

The accompanying notes form part of these financial statements.

NATIONAL TERTIARY EDUCATION INDUSTRY UNION
EDITH COWAN UNIVERSITY BRANCH

NOTES TO AND FORMING PART OF THE FINANCIAL STATEMENTS
FOR THE YEAR ENDED 30 JUNE 2006

Note 1: Statement of Significant Accounting Policies

This financial report is a general purpose financial report that has been prepared in accordance with Australian Accounting Standards, Urgent issues Group Consensus Views and other authoritative pronouncements of the Australian Accounting Standards Board and the requirements imposed by the reporting Guidelines of Part 3 of Chapter 8 of Schedule 1B of the Workplace Relations Act 1996, as amended.

The financial report has been prepared on an accrual basis and is based on historic costs and does not take into account changing money values.

The accounts have been prepared on a going concern basis.

The following is a summary of the material accounting policies adopted by the National Tertiary Education Industry Union – Edith Cowan University Branch (NTEU-ECU) in the preparation of this financial report.

Basis of Preparation

First-time adoption of Australian Equivalents to International Financial Reporting Standards

NTEU-ECU has prepared financial statements in accordance with the Australian equivalents to International Financial Reporting Standards (AIFRS) from 1 July 2005.

In accordance with the requirements of AASB 1: First-time Adoption of Australian Equivalents to International Financial Reporting Standards, adjustments to the accounts resulting from the introduction of AIFRS have been applied retrospectively to 2005 comparative figures. These accounts are the first financial statements of NTEU-ECU to be prepared in accordance with AIFRS.

The accounting policies set out below have been consistently applied to all years presented.

Reconciliations of the transition from previous GAAP to AIFRS have been included in Note 1(i) First-time Adoption to AIFRS to this report.

Reporting Basis and Conventions

The financial report has been prepared on an accruals basis and is based on historical costs modified by the revaluation of selected non-current assets and financial assets and financial liabilities for which the fair value basis of accounting has been applied.

NATIONAL TERTIARY EDUCATION INDUSTRY UNION
EDITH COWAN UNIVERSITY BRANCH

NOTES TO AND FORMING PART OF THE FINANCIAL STATEMENTS
FOR THE YEAR ENDED 30 JUNE 2006

Note 1: Statement of Significant Accounting Policies (cont'd)

Accounting Policies

(a) **Property, Plant and Equipment**

Each class of property, plant and equipment are carried at cost or fair value less, where applicable, any accumulated depreciation.

Plant and Equipment

Plant and equipment are measured on a cost basis.

The carrying amount of plant and equipment is reviewed annually by the Union to ensure it is not in excess of the recoverable amount from those assets. The recoverable amount is assessed on the basis of the expected net cash flows which will be received from the assets' employment and subsequent disposal. The expected net cash flows have not been discounted to present values in determining recoverable amounts.

Depreciation

The depreciable amount of all fixed assets are depreciated on a diminishing value basis over the useful lives of the assets to the association commencing from the time the asset is held ready for use.

The depreciation rates used for each class of depreciable asset are:

Class of Fixed Asset	Depreciation Rate
Office equipment	33%

(b) **Income Tax**

The union is exempt from income tax.

(c) **Impairment of Assets**

At each reporting date, the union reviews the carrying values of its tangible and intangible assets to determine whether there is any indication that those assets have been impaired. If such an indication exists, the recoverable amount of the asset, being the higher of the asset's fair value less costs to sell and value-in-use, is compared to the asset's carrying value. Any excess of the asset's carrying value over its recoverable amount is expensed to the income statement.

Where it is not possible to estimate the recoverable amount of an individual asset, the union estimates the recoverable amount of the cash-generating unit to which the asset belongs.

(d) **Revenue**

Membership income and interest income is brought to account when received.

(e) **Cash and Cash Equivalents**

Cash and Cash Equivalents includes cash on hand, at banks and on deposit.

NATIONAL TERTIARY EDUCATION INDUSTRY UNION
EDITH COWAN UNIVERSITY BRANCH

NOTES TO AND FORMING PART OF THE FINANCIAL STATEMENTS
FOR THE YEAR ENDED 30 JUNE 2006

Note 1: Statement of Significant Accounting Policies (cont'd)

(f) Goods and Services Tax (GST)

Revenues, expenses and assets are recognised net of the amount of GST, except where the amount of GST incurred is not recoverable from the Australian Tax Office. In these circumstances the GST is recognised as part of the cost of acquisition of the asset or as part of an item of the expense. Receivables and payables in the Statement of Financial Position are shown inclusive of GST.

Cash flows are presented in the cash flow statement on a gross basis, except for the GST component of investing and financing activities, which are disclosed as operating cash flows.

(g) Financial Instruments

Recognition

Financial instruments are initially measured at cost on trade date, which include transaction costs, when the related contractual rights or obligations exist. Subsequent to initial recognition these instruments are measured as set out below.

Financial assets at fair value through profit and loss

A financial asset is classified in this category if acquired principally for the purpose of selling in the short-term or if so designated by management. Derivatives are also categorised as held for trading unless they are designated as hedges. Realised and unrealised gains and losses arising from changes in the fair value of these assets are included in the income statement in the period in which they arise.

Available-for-sale financial assets

Available-for-sale financial assets include any financial assets not included in the above categories. Available-for-sale financial assets are reflected at fair value. Unrealised gains and losses arising from changes in fair value are taken directly to equity.

Financial liabilities

Non-derivative financial liabilities are recognised at amortised cost, comprising original debt less principal payments and amortisation.

Impairment

At each reporting date, the group assess whether there is objective evidence that a financial instrument has been impaired. In the case of available-for-sale financial instruments, a prolonged decline in the value of the instrument is considered to determine whether an impairment has arisen. Impairment losses are recognised in the income statement.

(h) Comparatives

Where necessary, comparative information has been reclassified to achieve consistency in disclosure with current financial year information and other disclosures.

NATIONAL TERTIARY EDUCATION INDUSTRY UNION
EDITH COWAN UNIVERSITY BRANCH

NOTES TO AND FORMING PART OF THE FINANCIAL STATEMENTS
FOR THE YEAR ENDED 30 JUNE 2006

Note 1: Statement of Significant Accounting Policies (cont'd)

(i) Impact of First Time Adoption of AIFRS

These are the Union's first financial statements prepared in accordance with AIFRS. The accounting policies set out in Note 1 have been applied for the year ended 30 June 2006, the comparative information for the year ended 30 June 2005 and in the preparation of an opening Balance Sheet as at 1 July 2004 (the Union's date of transition).

In preparing its opening AIFRS Balance Sheet, the Union has not adjusted amounts reported previously in accordance with its old basis of accounting (previous GAAP).

Critical Accounting Estimates and Judgments

The committee members evaluate estimates and judgments incorporated into the financial report based on historical knowledge and best available current information. Estimates assume a reasonable expectation of future events and are based on current trends and economic data, obtained both externally and within the union.

Key Estimates – Impairment

The union assesses impairment at each reporting date by evaluating conditions specific to the group that may lead to impairment of assets. Where an impairment trigger exists, the recoverable amount of the asset is determined. Value-in-use calculations performed in assessing recoverable amounts incorporate a number of key estimates.

NATIONAL TERTIARY EDUCATION INDUSTRY UNION
EDITH COWAN UNIVERSITY BRANCH

NOTES TO AND FORMING PART OF THE FINANCIAL STATEMENTS
FOR THE YEAR ENDED 30 JUNE 2006

Note 2: Revenue	2006 \$	2005 \$
Operating activities		
- members subscriptions	219,007	223,483
- general staff subscriptions	29,139	34,126
- contributions from ASA – ECU	3,000	6,000
Non-operating activities		
- interest received	277	138
Total Revenue	<u>251,423</u>	<u>263,747</u>

Note 3: Auditor's Remuneration

Remuneration of auditor		
- audit or review services	1,700	1,200
- other services	-	-
Total remuneration	<u>1,700</u>	<u>1,200</u>

Note 4: Cash and Cash Equivalents

Cash at Bank	42,358	25,887
Cash on hand	100	100
	<u>42,458</u>	<u>25,987</u>

Reconciliation of cash

Cash at the end of the financial year as shown in the statement of cash flows is reconciled to items in the balance sheet as follows:

Cash and cash equivalents	<u>42,458</u>	<u>25,987</u>
---------------------------	---------------	---------------

NATIONAL TERTIARY EDUCATION INDUSTRY UNION
EDITH COWAN UNIVERSITY BRANCH

NOTES TO AND FORMING PART OF THE FINANCIAL STATEMENTS
FOR THE YEAR ENDED 30 JUNE 2006

	2006 \$	2005 \$
Note 5: Property, Plant & Equipment		
Office Equipment- at cost	13,656	10,706
Less accumulated depreciation	(8,402)	(4,664)
	5,254	6,042

Movements in carrying amounts movement in the carry amounts of property, plant and equipment between the beginning and the end of the current financial year.

Balance at the beginning of year	6,042	9,575
Additions	2,950	-
Disposals	-	-
Depreciation expense	(3,738)	(3,533)
	5,254	6,042

Note 6: Provisions

CURRENT

Provision for Executive Officer Leave Entitlements	5,466	3,437
	5,466	3,437

NON-CURRENT

Provision for Executive Officer Leave Entitlements	5,354	2,805
	5,354	2,805

Note 7: Statement of Changes in Equity

Opening Balance as at 1 July	25,787	15,946
Net result attributable to members	11,105	9,841
Closing Balance as at 30 June	36,892	25,787

Note 8: Cash Flow Information

Reconciliation of Cash Flow from Operations with Profit from ordinary activities

Surplus	11,105	9,841
Non-cash flows in profit		
Depreciation	3,738	3,533
Loss on sale of property, plant & equipment		
Changes in assets and liabilities:		
Increase in provisions	4,577	6,242
Net cash provided by (used in) operating activities	19,420	19,616

NATIONAL TERTIARY EDUCATION INDUSTRY UNION
EDITH COWAN UNIVERSITY BRANCH

NOTES TO AND FORMING PART OF THE FINANCIAL STATEMENTS
FOR THE YEAR ENDED 30 JUNE 2006

2006 2005
 \$ \$

Note 9: Financial Instruments

(a) Interest Rate Risk

The union's exposure to interest rate risk, which is the risk that a financial instrument's value will fluctuate as a result of changes in market interest rates and the effective weighted average interest rates on those financial assets and financial liabilities, is as follows:

	Weighted Average Effective Interest Rate		Floating Interest Rate		Fixed Interest Rate Maturing			
			Rate		Within 1 year		1 to 5 years	
	2006	2005	2006	2005	2006	2005	2006	2005
FINANCIAL ASSETS	%	%	\$	\$	\$	\$	\$	\$
Cash	.05	.05	42,458	25,987	-	-	-	-
TOTAL FINANCIAL ASSETS	.05	.05	42,458	25,987	-	-	-	-

(b) Credit Risk

The maximum exposure to credit risk, excluding the value of any collateral or other security, at balance date to recognised financial assets is the carrying amount, net of any provisions for doubtful debts, as disclosed in the statement of financial position and notes to the financial statements.

The union does not have any material credit risk exposure to any single debtor or group of debtors under the financial instruments entered into by the entity.

(c) Net Fair Values

Methods and assumptions used in determining net fair value.

For all assets and other liabilities the net fair value approximates their carrying value. No financial assets and financial liabilities are readily traded on organised markets in standardised form

The aggregate net fair values and carrying amounts of financial assets and financial liabilities are disclosed in the statement of financial position and in the notes to the financial statements.

Note 10: Segment Reporting

The entity operates in one geographical and business segment, being a union for the benefit of members of the Edith Cowan University in Australia.

Note 11: Entity Details

Principal place of business of the union is:

NTEU – ECU Branch
 Room 435/Building 8
 100 Joondalup Drive
 JOONDALUP WA 6027

NATIONAL TERTIARY EDUCATION INDUSTRY UNION
EDITH COWAN UNIVERSITY BRANCH

NOTES TO AND FORMING PART OF THE FINANCIAL STATEMENTS
FOR THE YEAR ENDED 30 JUNE 2006

2006	2005
\$	\$

Note 12: Related Parties

The names of the members of the committee during the financial year were:

Other Related Party Transactions

(a) NTEU-WA State Division and NTEU National Office

The NTEU-ECU branch has transactions with both the NTEU-WA State Division (WA Division) and NTEU National Office, all of these transactions are on normal commercial terms and conditions.

Capitation fees are paid to the WA Division, the amounts payable are determined by the NTEU National Office. In 2006 these totaled \$58,571 (2005 \$66,970). A one-off payment to the WA Division as a contribution towards a staff redundancy package was also made in 2005 of \$3,000, no contribution was made this year.

Capitation fees and defence fund levy paid to the NTEU National Office totaled \$101,633 (2005 \$107,388). Again these amounts are determined by the NTEU National Office.

The NTEU National Office employs the NTEU-ECU Branch Executive Officer. All costs incurred in employing staff on behalf of NTEU-ECU including wages and salaries, superannuation and payroll tax are reimbursed by the NTEU-ECU branch. These costs totalled \$48,938 during the financial year (2005 \$45,624). The estimated employee entitlement for the Executive Officer as at 30 June 2006 is \$10,820 (2005 \$6,242) this amount is provided for in the financial statements (Note 6).

At balance date no amount is payable or receivable from either the WA Division or the NTEU National Office.

(b) Academic Staff Association of Edith Cowan University (ASA-ECU)

Transactions with ASA-ECU are on normal commercial terms and conditions.

NTEU-ECU received \$3,000 (2005 \$6,000) from ASA-ECU, \$1,000 (2005 \$1,000) for the provision of secretarial support, nil (2005 \$5,000) for leave entitlements accrued whilst the Executive Officer was employed by ASA-ECU and \$2,000 as a donation (2005 nil)

The committee of NTEU-ECU has also resolved to reimburse and indemnify to the extent necessary ASA-ECU against all reasonable future costs associated with servicing the members of the ASA-ECU.

NATIONAL TERTIARY EDUCATION INDUSTRY UNION
EDITH COWAN UNIVERSITY BRANCH

NOTES TO AND FORMING PART OF THE FINANCIAL STATEMENTS
FOR THE YEAR ENDED 30 JUNE 2006

2006	2005
\$	\$

Note 13: Reporting guidelines

In accordance with Section 255 of the Workplace Relations Act 1996, as amended the following information is provided:

- a) No amount was paid in 2006 or 2005 to the Edith Cowan University as consideration for the employer making payroll deductions of membership subscriptions;
- b) no amount was paid in 2006 or 2005 for legal costs or expenses related to litigation or other legal matters.

Note 14: Members' access to financial records

Section 272 of Schedule 1B of the Workplace Relations Act 1996, states

- (1) A member of a reporting unit, or a Registrar, may apply to the reporting unit for specified prescribed information in relation to the reporting unit to be made available to the person making the application.
- (2) The application must be in writing and must specify the period within which, and the manner in which, the information is to be made available. The period must not be less than 14 days after the application is given to the reporting unit.
- (3) A reporting unit must comply with an application made under subsection (1).

Note 15: Change in accounting Policy

- a. The union has adopted the following accounting standards for application on or after 1 January 2005;
 - AASB 132: Financial Instruments: Disclosure and Presentation
 - AASB 139: Financial Instruments: Recognition and Measurement

The changes resulting from the adoption of AASB 132 relate primarily to increased disclosures required under the Standard and do not affect the value of amounts reported in the financial statements. The adoption of AASB 139 has not resulted in any material differences in the recognition and measurement of the union's financial instruments.

NATIONAL TERTIARY EDUCATION INDUSTRY UNION
EDITH COWAN UNIVERSITY BRANCH

NOTES TO AND FORMING PART OF THE FINANCIAL STATEMENTS
FOR THE YEAR ENDED 30 JUNE 2006

2006 2005
 \$ \$

- b. The following Australian Accounting Standards issued or amended are applicable to the union but not yet effective and have not been adopted in preparation of the financial statements at reporting date.

AASB amendment	AASB Standard Affected	Nature of change in Accounting Policy and Impact	Application Date of the Standard	Application Date for the Union
2005-5	AASB1: First-time Adoption of AIFRS and AASB 139: Financial Instruments: Recognition and Measurement	No change, no impact	1 January 2006	1 July 2006
2005-6	AASB 3: Business Combinations	No change, no impact	1 January 2006	1 July 2006
2005-10	AASB 139 Financial Instruments: Recognition and Measurement; AASB 101 Presentation of Financial Statements; AASB 114 Segment Reporting; AASB 117 Leases; AASB 133 Earnings per Share; AASB 132 Financial Instruments: Disclosure and Presentation; AASB 1 First-time Adoption of AIFRS; AASB 4 Insurance Contracts; AASB 1023 General Insurance Contracts; AASB 1038 Life Insurance Contracts	No change, no impact	1 January 2006	1 July 2006
New standard	AASB 7: Financial Instruments: Disclosure	No change, no impact	1 January 2006	1 July 2006

All other pending Standards issued between the previous financial report and the current reporting dates have no application to the union.

AASB Amendment	AASB Standard Affected
2004-3	AASB 1 First-time Adoption of AIFRS, AASB 101 Presentation of Financial Statements, AASB 124 Related Party Disclosures
2005-1	AASB 139 Financial Instruments: Recognition and Measurement
2005-2	AASB 1023 General Insurance Contracts
2005-4	AASB 139 Financial Instruments: Recognition and Measurement, AASB 132 Financial Instruments: Disclosure and Presentation
2005-9	AASB 4 Insurance Contracts, AASB 1023 General Insurance Contracts, AASB 139 Financial Instruments: Recognition and Measurement; AASB 132 Financial Instruments: Disclosure and Presentation
2006-1	AASB 121: The effects of Changes in Foreign Exchange Rates New Standard
New Standard	AASB 119: Employee Benefits: December 2004

INDEPENDENT AUDIT REPORT
TO THE MEMBERS OF
THE NATIONAL TERTIARY EDUCATION INDUSTRY UNION
EDITH COWAN UNIVERSITY BRANCH

**Priestley
& Morris**

Chartered Accountants

ABN: 87 207 576 647

SCOPE

We have audited the attached financial report of the National Tertiary Education Industry Union – Edith Cowan University Branch (NTEU-ECU) comprising of the Committee of Management Statement, Income Statement, Balance Sheet, Statement of Cash Flows and Notes to and forming part of the Financial Statements of the NTEU-ECU for the year ended 30 June 2006. The NTEU-ECU Committee of Management is responsible for the financial report. We have conducted an independent audit of the financial report in order to express an opinion on it to the members.

Our audit has been conducted in accordance with Australian Auditing Standards to provide reasonable assurance whether the financial report is free of material misstatement. Our procedures included examination, on a test basis, of evidence supporting the amounts and other disclosures in the financial report, and the evaluation of accounting policies and significant accounting estimates. These procedures have been undertaken to form an opinion whether, in all material respects, the financial report is presented fairly in accordance with Accounting Standards, the Workplace Relations Act 1996, as amended, and other mandatory professional reporting requirements in Australia so as to present a view which is consistent with our understanding of the union's financial position and performance as represented by the results of its operations and its cash flows.

The audit opinion expressed in this report has been formed on the above basis.

AUDIT OPINION

In our opinion the general purpose financial report of NTEU-ECU is presented fairly in accordance with Applicable Accounting Standards and the requirements imposed by Part 3 of Chapter 8 of Schedule 1B of the Workplace Relations Act 1996.

PRIESTLEY & MORRIS
Chartered Accountants

C. Thomson

.....
C. THOMSON ACA

PARTNER

Date: 22 / 9 / 06

Address: Perth, W.A.

Level 1 734 Albany Highway Victoria Park WA 6100

PO Box 1267 East Victoria Park WA 6981

Tel (08) 9470 2133 Fax (08) 9470 2933 email@priestleys.com.au Partners GJ Abdy MH Randall C Thomson

Re: nteueu2006 financial statements MES.doc

A correspondent firm of the Moore Stephens International Limited Group of independent firms.

**COMPILATION REPORT
TO THE MEMBERS OF
THE NATIONAL TERTIARY EDUCATION INDUSTRY UNION**

Priestleys

Chartered Accountants

ABN: 33 710 082 083

EDITH COWAN UNIVERSITY BRANCH

SCOPE

On the basis of information provided by the Committee of Management of NTEU-ECU we have compiled in accordance with APS 9 'Statement on Compilation of Financial Reports' the special purpose financial report comprising of the Statement of Income and Expenditure of the NTEU-ECU for the year ended 30 June 2006.

The special purpose for which the special purpose financial report has been prepared is to provide financial information to the members. Accounting Standards and other mandatory professional reporting requirements have not been adopted in the preparation of the special purpose financial report.

The Committee of Management is solely responsible for the information contained in the special purpose financial report and have determined that the accounting policies used are consistent with the financial reporting requirements of the entity's rules and are appropriate to meet the needs of the Committee of Management for the purposes of complying with the rules of the entity.

Our procedures use accounting expertise to collect, classify and summarise the financial information, which the Committee of Management provided, into a financial report. Our procedures do not include verification or validation procedures. No audit or review has been performed and accordingly no assurance is expressed.

To the extent permitted by law, we do not accept liability for any loss or damage which any person, other than the entity, may suffer arising from any negligence on our part. No person should rely on the special purpose financial report without having an audit or review conducted.

The special purpose financial report was prepared for the benefit of the entity and its members for the purpose identified above. We do not accept responsibility to any other person for the contents of the special purpose financial report.

C. Thomson

C. THOMSON
Director

Date: 22 / 9 / 06

Level 1, 734 Albany Highway
VICTORIA PARK WA 6100

Level 1 734 Albany Highway Victoria Park WA 6100
PO Box 1267 East Victoria Park WA 6981

Tel (08) 9470 2133 Fax (08) 9470 2933 email@priestleys.com.au

P:\nteuecu\2006 financial statements MES.doc

Priestley & Morris Perth Pty Ltd ACN 056 660 407

A correspondent firm of the Moore Stephens International Limited Group of independent firms.

NATIONAL TERTIARY EDUCATION INDUSTRY UNION
EDITH COWAN UNIVERSITY BRANCH

STATEMENT OF INCOME & EXPENDITURE
FOR THE YEAR ENDED 30 JUNE 2006

	2006	2005
INCOME		
Academic Staff Subscriptions (Gross)	202,366	221,740
General Staff Subscriptions	29,139	34,014
Membership Subscriptions (net from Federal Officer)	16,641	1,855
Capitation paid to Nat Office	(73,850)	(85,148)
Defence Fund paid to Nat Office	(15,279)	(17,478)
Equal and Adjustment Fund paid to Nat Office	(12,504)	(4,762)
Capitation Paid to WA Division	(58,571)	(66,970)
Interest	277	138
Contributions from ASA of ECU	3,000	6,000
TOTAL INCOME	91,219	89,389
EXPENDITURE		
Audit	1,700	1,200
Bank Charges	29	165
Conferences	1,718	-
Depreciation	3,738	3,533
Entertainment & Hospitality	255	263
Gifts	159	53
Insurance Premiums	3,015	3,239
Industrial Action Expenses	-	398
IT Software and support	410	891
Meetings	235	228
Parking	176	172
Petty Cash	586	594
Photocopying	616	264
Postage & Couriers	-	82
Payroll Tax	1,954	2,336
Recruitment	1,491	-
Repairs & Maintenance	-	127
Stationery / Office Supplies	2,242	2,504
Sundry Expenses	340	73
Telephone	2,441	4,036
Time Release for President	5,000	5,000
Travelling	572	-
Unions WA Levy	1,875	1,860
WA Div (contribution to staff redundancy payment)	-	3,000
Executive Officer Remuneration	46,984	43,288
Executive Officer Entitlements	4,578	6,242
TOTAL EXPENDITURE	80,114	79,548
NET SURPLUS (DEFICIT)	11,105	9,841

To be read in conjunction with the attached compilation report of Priestleys Chartered Accountants.



Life at One

Research into stress in the lives of children, undertaken by NTEU member Associate Professor Margaret Sims, School of International, Cultural and Community Studies, provided the framework for the second of two new ABC documentaries. *Life at One* tells the stories of 11 Australian families and their children. The families are to be filmed over 7 years as part of a federally funded study of how Australian children are living, with the aim of enabling more effective planning of services.

Part I of this first series has generated considerable discussion. The ABC will screen Part II at 8.30pm on 19 October.

Make life fair everywhere

Union Aid Abroad – APHEDA is the overseas humanitarian aid agency of the Australian Council of Trade Unions. The agency seeks new partners to join in the struggle to promote workers' rights, justice and solidarity around the world.

APHEDA is now running a "Make Life Fair Everywhere" campaign with the aim of achieving 5,000 individual donors by September 2007, and seeks expressions of interest from people who might be able to assist. Currently APHEDA has 1,133 Global Justice Program Donors, 561 Paylink donors and some Workplace Giving donors.

If you can contribute in any way, visit www.apheda.org.au or call 1800 888 674 to find out how you can become a Global Justice Partner.

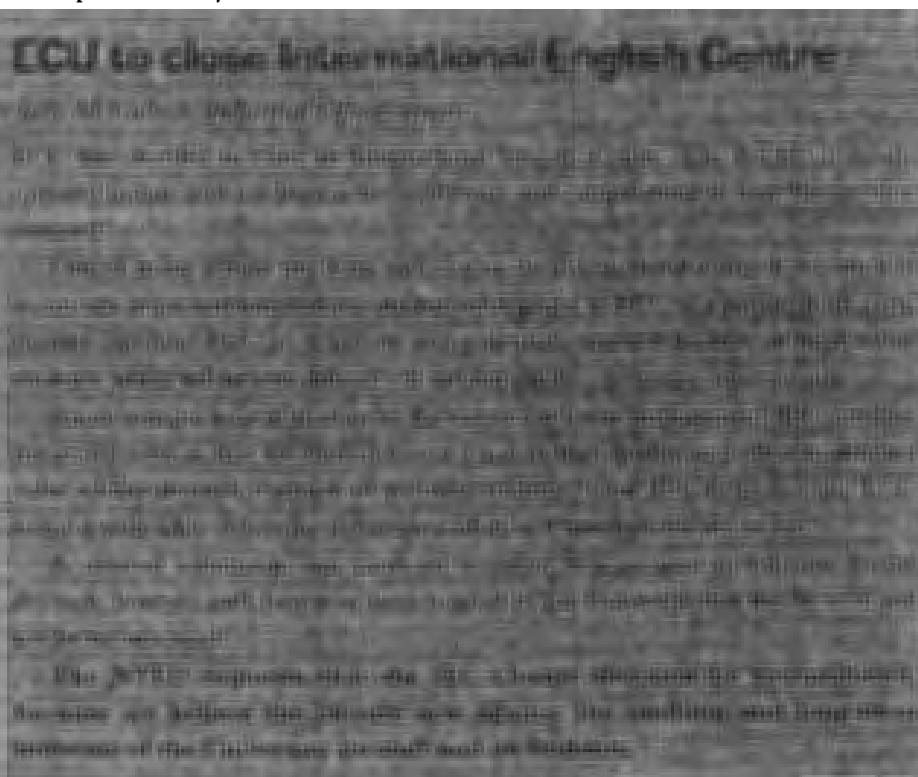
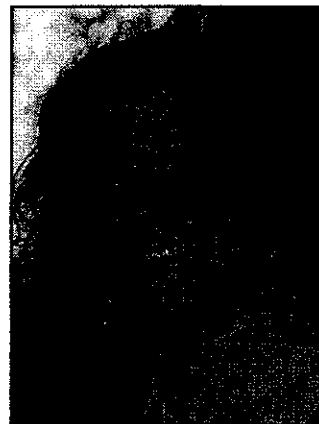
Why am I a member?

Nathalie Collins, Marketing Account Manager (Regional) based at the South West Campus, reflects.

I enjoy working for ECU and I believe that the university strives to provide a challenging and rewarding workplace environment. However I know that situations can arise which make university systems difficult to navigate, or there may be issues between staff which need resolution.

I belong to the union because I know that even if I never need to avail myself of the advocacy the NTEU provides, my colleagues at ECU or in the industry may require the support. I also understand that, by contributing to the union, I am strengthening the voice of workers everywhere and contributing to shaping the world of work beyond my campus, organisation and industry.

I recommend joining the union. It feels great to know that you are not alone. The service is there even if you never have to use it. It is also a good feeling to know you are helping to provide that service for others. In an increasingly "user pays" world, the union provides a way for us to care for each other.

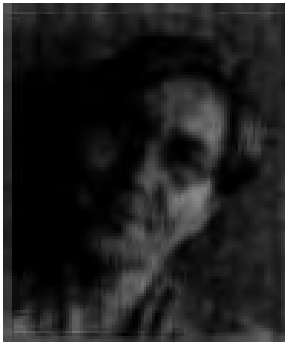


NTEU past, present and future... meet the presidents

Elections were conducted recently for the NTEU (ECU Branch) Executive Committee for the term 1 October '06 to 30 September '08. You are warmly invited to contact any member of the Branch Executive if you have an issue you would like to discuss.

Immediate past president sums up

Dr **Ute Mueller** (Joondalup Campus, ext: 5272) is a Senior Lecturer in Mathematics. At ECU since 1994, she has been active on the Branch Executive since 1998, including as Vice President (Academic) and President. She has been involved in the last three enterprise bargaining rounds and has been representing staff on the Academic Staff Joint Consultative Committee since 2000. Ute is the Secretary to the Branch Executive.



Dear Colleagues

This is my last column as Branch President (albeit a bit late) and I would like to take the opportunity to reflect on my term. We started with the HEWRs (Higher Education Workplace Relations Reforms) which came down in April 2005, followed later by the WorkChoices legislation. These federal changes set the scene for intense and the shortest ever (but extremely time-consuming) negotiations for Union Collective Agreements that were concluded in mid-2006. The features of these have been

discussed in previous newsletters. Suffice it to say that we were successful in protecting the interests of our members despite the obstacles before us. This would not have been possible without the excellent local and national NTEU staff who supported our negotiations. It also would not have been possible without strong membership support and a high membership density, and we have to work collectively to ensure that it remains high. I encourage you to speak to your non-union colleagues and invite them to join.

On the back of this effort we all faced a major redundancy round which is not yet concluded, with some change management processes still active and some areas facing further cutbacks in the new year. The effect on staffing levels has not been uniform across the institution, and it is too early to fully assess the impact. We will have to remain vigilant and make sure that the potential ill effects of the restructuring, resulting from increased workloads, will be monitored carefully and thoroughly.

It is also too early to know if we have seen the end of the decline in new enrolments. The University has lowered the TER eligibility score to 55 as a means of securing more of the student pool. Some of you will not be happy with this strategy, given the negative press this move has received in WA. Time will tell if measurably higher enrolments are an outcome. (I hope that somebody will be analysing enrolments from this point of view.) It also makes one wonder where this leaves the portfolio entry pathway which was intended as an alternative for students who did not meet the normal entry criteria and what the impact will be on initiatives such as university preparation courses. Should we end up with higher enrolments, the question arises as to how to service the needs of this new (academically weaker) cohort of students so as to ensure that the net effect is not just a higher dropout rate. This is certainly a challenge.

I would like to conclude by thanking the Committee for its support, most notably Lyn Bloom and Kerry Evans, and of course our hardworking staff Gladys Bain and Judy McCulloch. At the same time, I wish Alan Needham every success in his role as "El Presidente".

Ute Mueller

Incoming President

Dr **Alan Needham** (Joondalup Campus, ext: 5460) has been at ECU since 1987, and is a Senior Lecturer in the School of Natural Sciences. In recent years he has served on various University committees and is currently a member of the Academic Services Committee, the Academic Staff Joint Consultative Committee and the Student Appeals Committee. For the past four years Alan was Secretary of the ASA and of the NTEU Branch Executive, and was involved in the last two rounds of enterprise bargaining. Alan returns from leave shortly to take up the role of President.



Acting President

Dr **David Wiles** (Joondalup Campus, ext: 5528) has worked at ECU/WACAE since 1986, teaching units in ageing, human services, social policy, and social work. He has served on the Branch Executive and ASA since 2001, and has been a Workplace Delegate for SICCS since 2000. David has worked for social justice in the community on behalf of seniors (Council on the Ageing), the young (School Councils and P&Cs), and people in general (Australian Labor Party). He is Acting President during October.



**ASA: Academic Staff Association*

...and get to know your new Branch Executive Committee 2006-2008



President

☛ **Dr Alan Needham** (*see Page 2*).

Vice-President [Academic]

☛ **Dr David Wiles** (*see Page 2*).

Vice-President [General]

☛ **Mr Clinton Moore-Crouch** (Joondalup Campus, ext: 2605) is an Analyst Programmer in Information Delivery Systems, KITSC. Although based at Joondalup, Clinton's role takes him to all ECU campuses.

Secretary

☛ **Dr Ute Mueller** (*see Page 2*).

Committee Member [Academic]

☛ **Dr Peter Roberts** (Joondalup Campus, ext: 5455) has been at ECU since 1994 and is a Senior Lecturer in Human Biology in the School of Exercise, Biomedical and Health Sciences. A union member for some years, he is entering his second year on the Branch Executive.

Committee Member [General]

☛ *Currently vacant*

Committee Member [Indigenous]

☛ **Mrs Terry Ngarritjan Kessar** (Mt Lawley Campus, ext. 6501) is an Alawa/Mara/Garrawa woman from the Ngukurr (Roper River) and Boroloola regions in the south east of the Top End of the Northern Territory. She lectures in Kurungkurl Katitjin, the School of Indigenous Australian Studies. Her disciplinary background is education, and she maintains an interest in language (Aboriginal English) and a bit of 'bush psychology'.

Committee Members

☛ **Dr Leisa Armstrong** (Mt Lawley Campus, ext: 6506) is a Lecturer in the School of Computer and Information Science. She started a Masters degree in Software Engineering in 1998, becoming a full time lecturer in 2002. Previously she worked in Queensland and WA as an Agricultural Research Scientist. Leisa joined the Branch Executive in 2005, recently representing the Branch at the National Council and National Women's Conference. Her interests include workers rights, multicultural affairs and promoting women in research.

☛ **Dr Ian Bennett** (Joondalup Campus, ext: 5414) is a Senior Lecturer in the School of Natural Sciences. His research interests include the physiology of Australian plants and plant tissue culture.

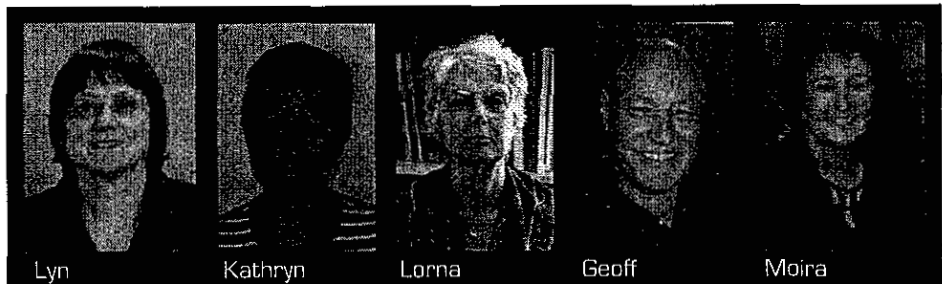
☛ **Assoc Prof Lyn Bloom** (Joondalup Campus, ext: 5883) is a researcher and lecturer in Mathematics. Lyn has been active in the NTEU over a long period of time, at the Branch, Division and National levels. She has been the WA Division representative on the National Executive since October 2002 and was the 2004-2006 National Vice-President (Academic). Lyn has recently taken up the position of WA Division Secretary.

☛ **Ms Kathryn Clarke** (Joondalup Campus, ext: 2109) joined Governance Services at ECU in 2004 as Secretary to various University committees, including the South West Campus Advisory Board and the WAAPA Board. She joined the Branch Executive in 2005, and edits the Branch newsletter.

☛ **Dr Lorna Kaino** (Bunbury Campus, ext: 7757) is a Lecturer in Creative Industries at the Bunbury Campus. Lorna will shortly be returning from long service leave.

☛ **Dr Geoff Lummis** (Mt Lawley Campus, ext: 6940) is a Senior Lecturer in Education (Science and Visual Arts), and has worked at ECU since 1986. His first ten years were at Bunbury in the foundation working for both the (then) Faculty of Education and the School of Visual Arts. Since 1996, he has worked at the three metropolitan campuses. He is a representative on Academic Board, Faculty Board (Education and Arts), the ASA, former treasurer of the Branch Executive, and is a member of many University and professional committees.

☛ **Dr Moira O'Connor** (Joondalup Campus, ext: 5593) is a Senior Lecturer in the School of Psychology. She teaches in applied, community and environmental psychology. She developed the community psychology stream in the School and takes an active part in teaching in the masters and doctoral programmes. Moira's recent research interests are in the areas of team effectiveness, palliative care, women's health, domestic violence and sense of place.



Lyn

Kathryn

Lorna

Geoff

Moira

National Tertiary Education Industry Union (ECU Branch)

Notice of Annual General Meeting

- ☎ **Time:** 12.15pm (light lunch provided)
- ☎ **Date:** Thursday, 9 November 2006
- ☎ **Venues:** Joondalup Campus (5.235) and Bunbury Campus via telephone link-up (*Bunbury location to be advised*)
- ☎ **The AGM for the Academic Staff Association of ECU will follow immediately after the conclusion of the NTEU AGM.**

A copy of the audited accounts for the NTEU (ECU Branch) for the year ending 30 June 2006 was emailed to members on 17 October 2006. Hard copies will be available at the AGM, or earlier on request from Mrs Gladys Bain (details at right). An extract from the Workplace Relations Act 1996, "Section 274: Information to be provided to members or registrar" was also emailed to members on 17 October, and appears below for your information. A copy of the Minutes of the AGM held on 29 November 2005 will be available at the AGM, or earlier on request from Gladys.

Extract from Workplace Relations Act 1996 (7 Oct 2002)

SECTION 274: INFORMATION TO BE PROVIDED TO MEMBERS OR REGISTRAR

274(1) Application For Information:

A member of an organization, or a Registrar, may apply to the organization for specified prescribed information in relation to the organization.

274(2) Provision of Information:

An organization shall, on application made under subsection (1) by a member of the organization or a Registrar, make the specified information available to the member or Registrar in such manner, and within such time, as is prescribed.

274(3) Function of Registrar:

A Registrar may only make an application under subsection (1) at the request of a member of the organization concerned, and the Registrar shall provide to a member information received because of an application made at the request of the member.

274(4) Notice in Accounts:

Accounts prepared under section 273 shall include a notice drawing attention to subsections (1), (2) and (3) and setting out those subsections.

SECTION 273: ORGANISATION TO PREPARE ACCOUNTS ETC.

273(1) Prescription:

As soon as practicable after the end of each financial year, an organization:

- (a) shall cause to be prepared from the accounting records kept by the organization under subsection 272(1) in relation to the financial year, such accounts and other statements, in relation to the financial year, as are prescribed; and
- (b) shall include in the accounts (other than accounts prepared in relation to the first financial year of the organization to which this Division applies) the relevant figures from the accounts prepared by the organization, under this subsection, in relation to the preceding financial year.

273(2) Certificates:

The regulations may provide for the giving of certificates in, or in relation to, accounts or other statements prepared under subsection (1).

SECTION 272: ORGANISATION TO KEEP PROPER ACCOUNTING RECORDS

272(1) Prescription:

An organization shall:

NTEU (ECU Branch)

Branch's representatives

President: Mrs Gladys Bain

Secretary: Mrs Gladys Bain

Branch Office

10th Floor, 10th Floor

10th Floor, 10th Floor

10th Floor, 10th Floor

10th Floor, 10th Floor

10th Floor, 10th Floor

10th Floor, 10th Floor

10th Floor, 10th Floor

10th Floor, 10th Floor

10th Floor, 10th Floor

10th Floor, 10th Floor

10th Floor, 10th Floor

10th Floor, 10th Floor

10th Floor, 10th Floor

10th Floor, 10th Floor

10th Floor, 10th Floor

10th Floor, 10th Floor

10th Floor, 10th Floor

10th Floor, 10th Floor

10th Floor, 10th Floor

10th Floor, 10th Floor

10th Floor, 10th Floor

10th Floor, 10th Floor

10th Floor, 10th Floor

10th Floor, 10th Floor

10th Floor, 10th Floor

10th Floor, 10th Floor

10th Floor, 10th Floor

10th Floor, 10th Floor

10th Floor, 10th Floor

10th Floor, 10th Floor

10th Floor, 10th Floor

10th Floor, 10th Floor

10th Floor, 10th Floor

10th Floor, 10th Floor

10th Floor, 10th Floor

10th Floor, 10th Floor

10th Floor, 10th Floor

10th Floor, 10th Floor

10th Floor, 10th Floor

10th Floor, 10th Floor

10th Floor, 10th Floor

10th Floor, 10th Floor

10th Floor, 10th Floor

10th Floor, 10th Floor

NOTICE TO MEMBERS OF THE NTEU (ECU BRANCH)

FINANCIAL STATEMENTS FOR YEAR ENDING 30 JUNE 2005

SECTION 274: INFORMATION TO BE PROVIDED TO MEMBERS OR REGISTRAR

274(1) Application For Information

A member of an organization, or a Registrar, may apply to the organization for specified prescribed information in relation to the organization.

274(2) Provision of Information

An organization shall, on application made under subsection (1) by a member of the organization or a Registrar, make the specified information available to the member or Registrar in such manner, and within such time, as is prescribed.

274(3) Function of Registrar

A Registrar may only make an application under subsection (1) at the request of a member of the organization concerned, and the Registrar shall provide to a member information received because of an application made at the request of the member.

274(4) Notice in Accounts

Accounts prepared under section 273 shall include a notice drawing attention to subsections (1), (2) and (3) and setting out those subsections.

SECTION 273: ORGANISATION TO PREPARE ACCOUNTS ETC.

273(1) Prescription

As soon as practicable after the end of each financial year, an organization:

- (a) shall cause to be prepared from the accounting records kept by the organization under subsection 272(1) in relation to the financial year, such accounts and other statements, in relation to the financial year, as are prescribed; and
- (b) shall include in the accounts (other than accounts prepared in relation to the first financial year of the organization to which this Division applies) the relevant figures from the accounts prepared by the organization, under this subsection, in relation to the preceding financial year.

273(2) Certificates

The regulations may provide for the giving of certificates in, or in relation to, accounts or other statements prepared under subsection (1).

SECTION 272: ORGANISATION TO KEEP PROPER ACCOUNTING RECORDS

272(1) Prescription An organization shall:

- (a) keep such accounting records as correctly record and explain the transactions and financial position of the organization, including such records as are prescribed;
- (b) keep its accounting records in such a manner as will enable accounts and statements to be prepared from them under section 273; and
- (c) keep its accounting records in such a manner as will enable the accounts of the organization to be conveniently and properly audited under this Division.

272(2) Cash or accrual basis

Accounting records of an organization may, so far as they relate to the income and expenditure of the organization, be kept on a cash basis or accrual basis, at the option of the organization.